

**AL-5001-MPC-HD2MUDKL**

# AI SUPER-PRECISION FACE RECOGNITION FEVER & MASK DETECTION MACHINE



## OVERVIEW

AI ultra-precision human body temperature measuring face recognition machine is efficient with high performance & high reliability. Based on infrared thermal imaging technology and relying on deep learning algorithms, it has fast recognition speed, high accuracy, and fast capture the face information for a 1:N comparison. During face recognition, the human body temperature will be collected for temperature measurement. It can be used with personnel passages to achieve the rapid movement of persons and the control of entry and exit of persons, maximizing the efficiency of epidemic prevention. It is an ideal solution for Government or private offices, Schools buildings, Shopping malls, exhibition centers, railway and airports etc.

## FEATURES

- 1/1.8" OV High-resolution CMOS Sensor
- 1/2.8" SONY Starvis Back illuminated CMOS sensor IMX307
- 7 inch IPS HD LCD screen, Plastic screen, IP66
- Dual Lenses with NIR & Color
- 2x2MP AI HD Cameras
- 24x7 LED White Light & 2x Infrared Light
- 1.2mm thick tampered glass
- Metal body and bracket, Full screen recognition area
- Temperature measurement module
- Face recognition & Face Mask Detection
- Up to 30,000 Face database capacity
- Local storage up to 25,000 records
- Built in Speaker support voice broadcast
- Face recognition distance 0.5-2.2m
- Fast recognition speed 200ms
- Temperature measuring distance 0.5-1.3mtrs.
- Temperature measurement accuracy  $\pm 0.3$
- Reset Key, R232 & RS485 Interface

## BODY TEMPERATURE SCANNER

Alcon AI body temperature detection system can be used as a very effective mass fever scanner, allowing organizations to monitor the temperature in which there is a constant flow of peoples. Incorporate of a AI based camera and facial recognition technology, our Body Temperature System can provide temperature information in real time with accuracy  $\pm 0.3^{\circ}\text{C}$ , which preventing the spread of the virus to potentially unlimited numbers of peoples, other key workers, stuffs, members & public.

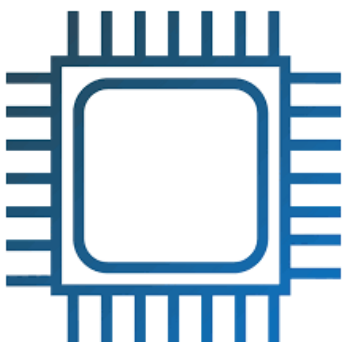


### BUILT-IN 7" HD IPS LCD DISPLAY

The Alcon AI temperature detection device is coming with built in 7" HD IPS LCD display, speaker & white light. Which will help users to assist on detection of abnormal body temperature, without mask & unauthorized person etc. Because of it's inbuilt display its not required any extra display equipment. Which saving project costs & it's backend processing time.

## ACCESS CONTROL

Security & protection is a rising concern in the world today during this 2019 (COVID-19) pandemic situation. From hackers accessing valuable information to intruders threatening the safety & protection of people and property, companies are recognizing the need for better security & protection. To improve the physical safety & security of buildings and facilities, one of the best options is often the use of turnstiles to control employee and visitor access.



### BUILT-IN 8GB EMMC ROM FOR 30,000 FACE DATABASE

AL-5001-MPC-HD2MUDKL is Coming with built in eMMC ROM up to 8GB which can store up to 300,000 face database without any SD card or external storage dive. Because of it's embedded In-memory database, the AL-5001-MPC-HD2MUDKL perform faster than traditional devices because, they require fewer CPU instructions. They also eliminate the time it takes to access data from a disk.

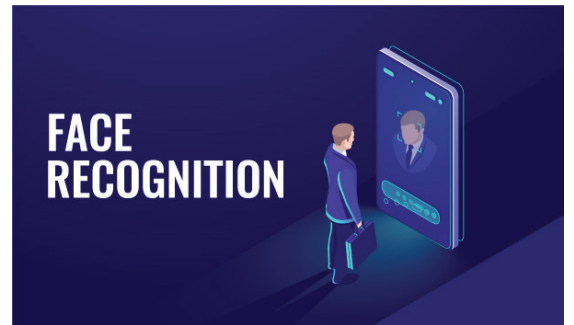


## FACE MASK DETECTION

There is currently no vaccine to prevent corona virus disease 2019 (COVID-19). The best way to prevent illness is to avoid being exposed to this virus. Facemask is one of the most effective ways to cut down the route of infection according to experience. Based on deep-learning algorithm mask detection camera could detect face and recognize, that whether this face is covered by face mask. If camera recognized one person without wearing facemask, then built-in speaker will display voice warning and white light will flash for warning.

## FACE RECOGNITION

Facial recognition is a way of recognizing a human face through technology. Biometric system is preferred for people identification due to its reliability and accuracy. Face recognition is required more and more in video surveillance system. With help of AI technology, face images could be trained indifferent distance and angle and face model can be built by algorithm, which improves accuracy and speed of recognition. Based on deep-learning algorithm face recognition products in Alcon are designed for capture and recognition face in real-time. With a lot of experience in different video analytics projects, Alcon has ability to provide whole solution for our customers.



## TOUCH LESS

Spread of the novel coronavirus has jolted awareness of hygiene as it relates to touching surfaces such as keypads. No longer in favor are contact-based modalities including use of security key numbers and keypads. During this COVID-19 pandemic, direct contact with potential for serious cross-infection. Alcon have focused on touchless method to take prevention from COVID-19 & prepared AL-5001-MPC-HD2MUDKL, which is based on AI face recognition technology. Without any physical contact access control can work from 0.5-1.3M, which is safe & reliable.

## SPECIFICATION

MODEL		AL-5001-MPC-HD2MUDKL
Main Processor		MX3520
Operating System		Embedded LINUX
RAM		DDR3 512MB
ROM		EMMC 8GB
SCREEN		
Dimensions		7 inch IPS HD LCD screen
Resolution		600*1024
CAMERA		
Type		2MP camera
Sensor		1/5" GC2145
Resolution		NIR 800*600 15fps
Lens		2.4mm
Camera		
Type		Daily camera
Sensor		1/2.8" SONY Starvis Back-illuminated CMOS sensor IMX307
Resolution		Color 1920*1080 30fps
Lens		4.5mm
BODY TEMPERATURE DETECTION		
Measuring site		Full screen recognition
Temperature range		Indifferent human body temperature measurement
Temperature measuring distance		0.5-1.3m, 0.75m is the best
Temperature measurement accuracy		± 0.3°C
FACE RECOGNITION		
Detection Type		Mask detection only
Face recognition distance		0.5-2.3m
Face database capacity		Max support 30,000 faces
Face Posture		Vertical 58°-60°, horizontal 35°
Occlusion		Ordinary glasses and short sea retention have no effect on recognition.
Expression		Under normal circumstances, slight expressions do not affect recognition.
Response Speed		About 200ms
Face exposure		Support
Local Storage		Support storage of 25,000 records
Recognition area		Full screen recognition
Upload Method		TCP, HTTP, MQTT

NETWORK FUNCTIONS	
Network protocol	IPv4, TCP/IP, HTTP
Interface protocol	Private protocol
Security Mode	Authorized password
Event linkage	Voice broadcast, Abnormal event upload to the platform
System Upgrade	Support remote upgrade
ACCESSORIES	
Supplementary light	IR light, LED white light
Audio out	Built in Speaker support voice broadcast after successful recognition
INTERFACE	
Network Interface	RJ45 10M/100M Network Adaptation
Relay Output	Support
RS485 interface	Support
Reset key	Support
GENERAL	
Housing	Aluminum alloy, Ultra-white tempered glass panel, IP66
Operating Temperature	10 °C ~ 50 °C
Working humidity	10% -90% Non-condensing
Storage Temperature	-40 °C ~ 70 °C
Storage humidity	5% -95% Non-condensing
Power Supply	DC12V
Power dissipation (maximum)	≤ 12 W
Dimensions (mm)	219 (W) * 111 (H) * 21.5 (T)
Bracket size (mm)	33*189
Installation Method	Desktop installation/Floor installation/ Gate machine installation/ Column installation/Wall installation
Certification	CE & FCC

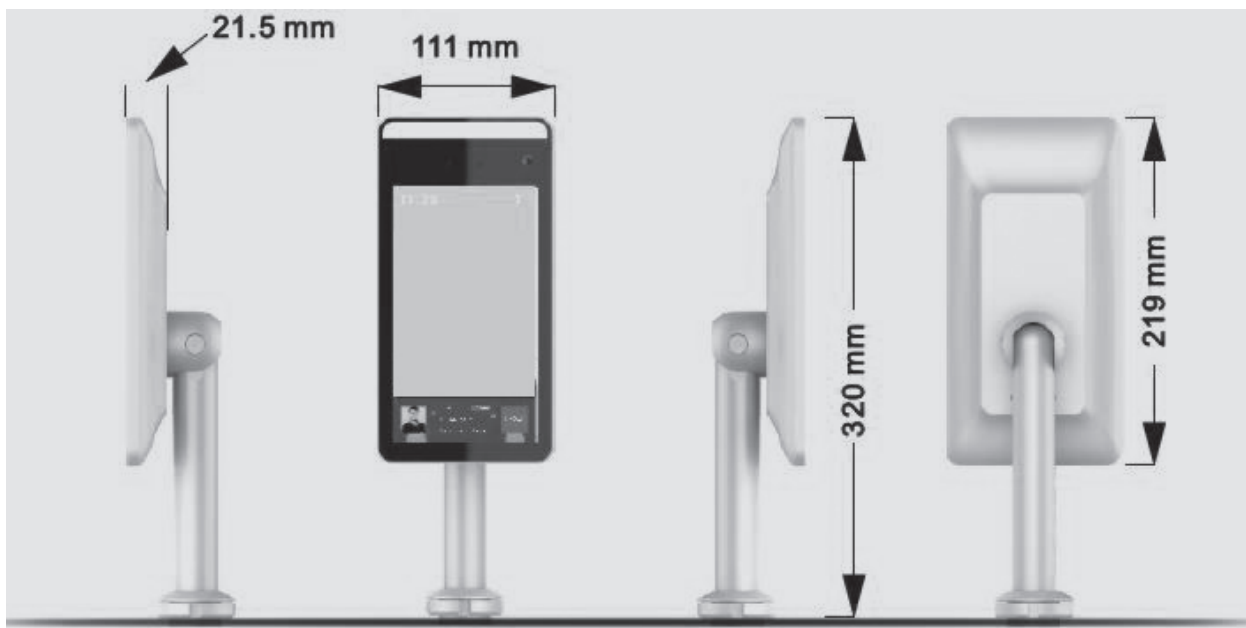
## ORDERING INFORMATION

AL-5001-MPC-HD2MUDKL

Ai Super-Precision Face Recognition Fever & Mask Detection Device

(Note: Pole mount device is required bracket to stand the device & wall mount device is not required any bracket. Before placing the PO, please confirm us for the same. Accessories are not include with device.)

## DIMENSIONS



## ACCESSORIES

### MOUNTING BRACKETS



#### ◀ Table Bracket

**Model: AL-TB-A001**

**2xUSB:**  
1x LED Light  
1x Network Cable  
1x12V DC

**Stand Size:**  
283(L)x260(W)x38(H)mm  
Weight 1.5Kgs



#### ◀ Floor Pole Bracket

**Model: AL-FP-A002**

**2xUSB:**  
1x LED Light  
1x Network Cable  
1x12V DC

**Stand Size:**  
283(L)x260(W)x600(H)mm  
Weight 13.7Kgs



#### ◀ Floor Pole Bracket

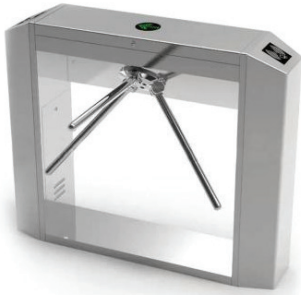
**Model: AL-FP-A003**

**2xUSB:**  
1x LED Light  
1x Network Cable  
1x12V DC

**Stand Size:**  
283(L)x260(W)x1100(H)mm  
Weight 24Kgs

### ACCESS CONTROL SYSTEM

Access control turnstiles automatically regulate entry to a designated building or area, usually on a one-by-one basis. But Alcon's AI based device can control the turnstile only for recognized peoples, peoples who ware mask & peoples with normal body temperature. Alcon's have various kind of turnstile solutions.



#### THREE ROLLER GATE

##### MODEL- AL-GMR01

- Single Movement
- Channel width: length ≤500mm
- Steering lever: Unidirectional, bidirectional (optional)
- Passing speed: 30 people/min (IC card)
- Input interface: Switch signal
- Communication Interface: RS485 electrical standard
- Communication Distance: <1200 m
- Size 1200x290x1000mm



#### WING GATE

##### MODEL- AL-GMW01-TC

- Single/Dual Movement(Optional)
- Channel width: Two Sides length ≤600mm
- Passing speed: 30 people/min (IC card)
- Input interface: Switch signal
- Communication Interface: RS485 /TCP/IP(Optional)
- Size 1200x300x980mm



#### ANTI-COLLISION SWING GATE

##### MODEL- AL-GMW01-SC

- Single/Dual Movement(Optional)
- Channel width: Two Sides length ≤780mm
- Passing speed: 35people/min (IC card)
- Infrared: 4 Pairs
- Input interface: Switch signal
- Communication Interface: RS485 /TCP/IP
- Communication Distance: <1200 m
- Size 1200x186x980mm



\*Product specifications and availability are subject to change without notice.

