

AL-NVR5016-2D-LPR

H.265+ 16CH 2SATA SMART LPR NVR

ENTERPRISE LPR MANAGEMENT

- Ultra HD display
- Recording resolution up to 8MP
- H.265+/H.265(HEVC)/H.264+/H.264
- 1*RJ45 10/100/1000Mbps
- 1*USB 3.0; 2*USB 2.0
- Alarm In/Out 4-CH/1-CH
- Support Onvif & ANR
- Up to 10TB capacity for each HDD
- Smart VCA Management
- Enterprise LPR Management
- Advanced Functions Management
- Flexible storage options including NAS



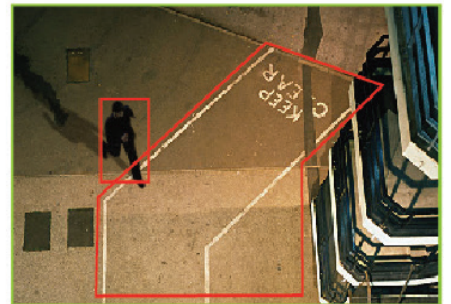
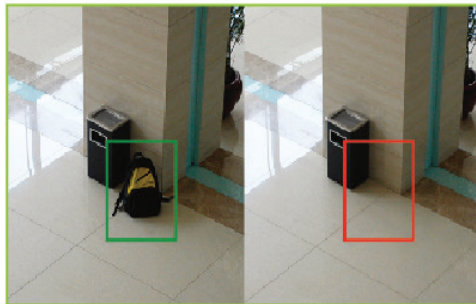
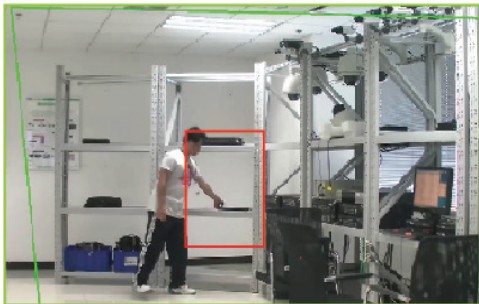
4K NETWORK VIDEO RECORDER

The Alcon AL-NVR5016-2D-LPR NVR is for the Smarter generation. It is a Smart Enterprise LPR management NVR which supports up to 16ch 4K IP camera input and recording. It Supports Advanced Functions Management, Smart VCA Management, 2*10TB SATA Interface and LPR/ANPR management functions, Including any 3rd party OEM IP camera with ONVIF compliance. The Alcon Premium Series NVR also supports intelligent video analytics like Tamper detection, People Counting and many other features.

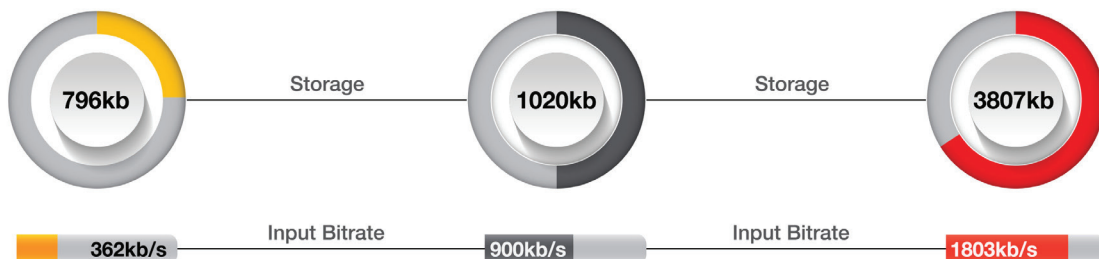
LPR (LICENCE PLATE RECOGNITION)



SMART ANALYSIS



BANDWIDTH AND DISK SPACE



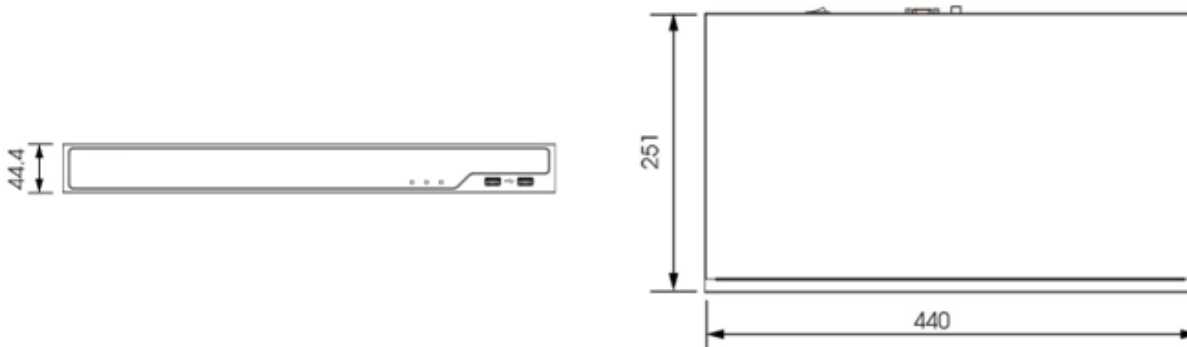
H.265+ can save approximate 50% bitrate than H.265 technology, saves 70%-80% bandwidth compared with H.264

SPECIFICATION

MODEL	AL-NVR5016-2D-LPR
VIDEO/AUDIO OUTPUT	
In/Out Bandwidth	160/160Mbps
HDMI Output	1-CH, Resolution: 3840x2160/30Hz, 1920x1080/60Hz, 1920x1080/50Hz, 1280x1024/60Hz, 1280x720/60Hz, 1024x768/60Hz HDMI Supports Audio Output
VGA Output	1-CH, Resolution: 1920x1080/60Hz, 1920x1080/50Hz, 1280x1024/60Hz, 1280x720/60Hz, 1024x768/60Hz Support
Dual Stream	Support
Recording Resolution	8MP/6MP/5MP/4MP/3MP/1080P/UXGA/720P/D1/VGA/CIF/QCIF
Synchronous Playback	2*(30fps @8MP), 2*(30fps @6MP), 3*(30fps @5MP), 4*(30fps @4MP), 5*(30fps @3MP), 8*(30fps @1080P), 16*(30fps @720P)
VIDEO/AUDIO COMPRESSION	
Video Compression	H.265+/H.265(HEVC)/H.264+/H.264
Audio Compression	G.711/AAC/G.722/G.726
Sample Rate	8KHz/16KHz
Synchronous Recording	16*5MP
STORAGE	
SATA	2*SATA HDD(3.5")
Capacity	Up to 10TB capacity for each HDD
RECORDING MANAGEMENT	
Recording Type	Continuous, Event (Motion Detection, Alarm, VCA, Smart Analysis)
Snapshot Type	Continuous, Event (Motion Detection, Alarm, VCA, Smart Analysis)
Playback Type	General Playback, Event Playback, Tag Playback, Split Playback, Picture Playback

BACKUP	
Backup	Video Backup, Image Backup
Network	
Protocol	IPv4/IPv6, TCP, UDP, RTP, RTSP, RTCP, HTTP, HTTPS, DNS, DDNS, DHCP, NTP, SNMP, SMTP, SNMP, UPnP, NFS
EXTERNAL INTERFACE	
Network Interface	1*RJ45 10/100/1000Mbps
USB Interface	1*USB 3.0; 2*USB 2.0
Audio Input/Output	— /1*RCA
Alarm Input/Output	4-CH/1-CH
GENERAL	
Compatibility	ONVIF
Advanced Function	Alcon MS ANR
Video Analysis(Optional)	Region Entrance, Region Exiting, Advanced Motion Detection, Tamper Detection, Line Crossing, Loitering, Human Detection, People Counting, Object Left, Object Removed
Power Supply	DC 12V 50Hz~60Hz
Consumption	≤10W(Without HDD)
Working Conditions	Temperature: -10°C~55°C/Humidity: 10%~90%
Dimensions	Rack Mountable Chassis (1.0U Standard) 440mm(W)X251mm(D)X44.4mm(H)
Weight	2.6Kg
Warranty	2 Years

DIMENSIONS



ORDERING INFORMATION

AL-NVR5016-2D-LPR

H.265+ 16CH 2SATA SMART LPR NVR



*Product specifications and availability are subject to change without notice. Terms and Conditions Apply.