

AL-NVR5020-1D

S+265 1SATA 20CH 4K NVR

- Up to 20-ch Input
- S+265/H.265/H.264 video formats
- Income & Outgoing Bandwidth 80/80Mbps
- Support up to 8MP resolution
- ONVIF (PROFILE S/T/G), SDK, P2P
- Bandwidth:160Mbps
- 1 SATA interface for 1 HDDs
- Up to 10TB for each HDD
- HDMI andVGA simultaneous output
- Video output at up to 4K (3840×2160) resolution
- 1xRJ45 self-adaptive 10/100 Mbps network interface
- VCA: Tripwire;Double Tripwire;Perimeter;
Object Abandon;Object Missing;Loiter;Running;
Parking;Lens Dignose;Scene Switch Dignose;
Signal Abnormal Detection;Signal Loss Detection;
On Duty Detection;Crowd Detection;
People Counting;Face Detection



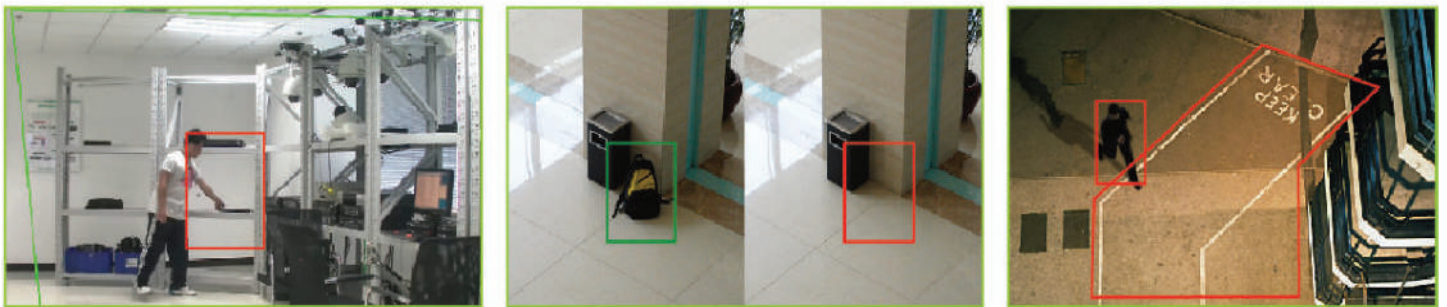
6MP NETWORK VIDEO RECORDER

The Alcon AL-NVR5020-1D NVR is for the Smarter generation. It is a Smart Enterprise NVR which supports up to 20CH IP camera input and recording. It Supports Smart Recording, Smart Search and Smart Plug and Play. It Supports any 3rd party OEM IP camera with ONVIF compliance. The Alcon Premium Series NVR also supports intelligent video analytics like Support Early Warning, Heatmap & Auto Tracking and many other features.

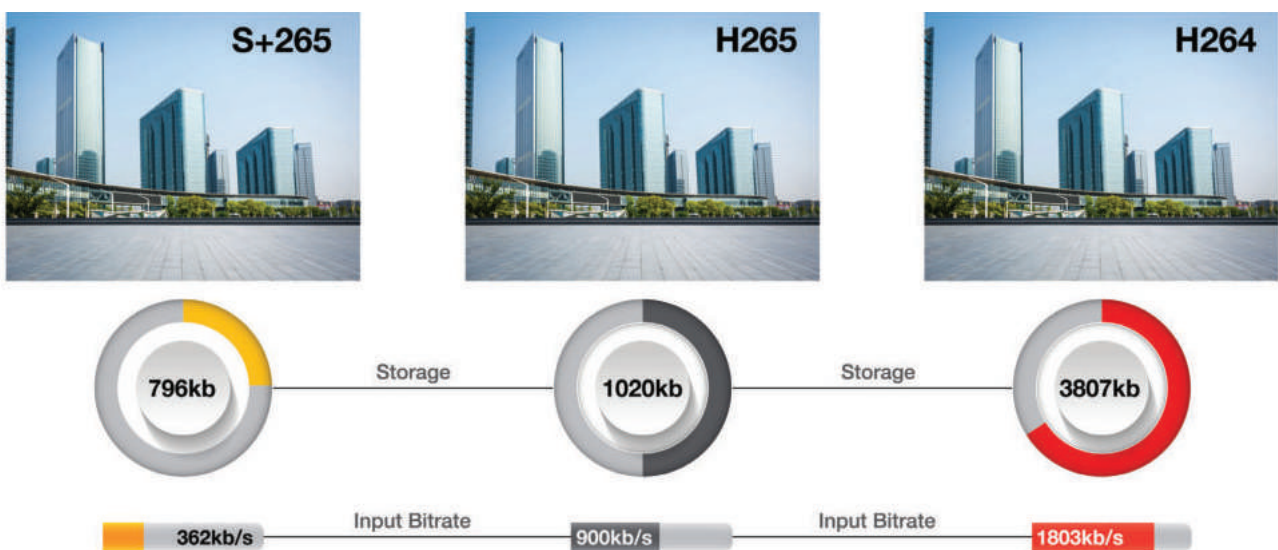
SMART RECORDING



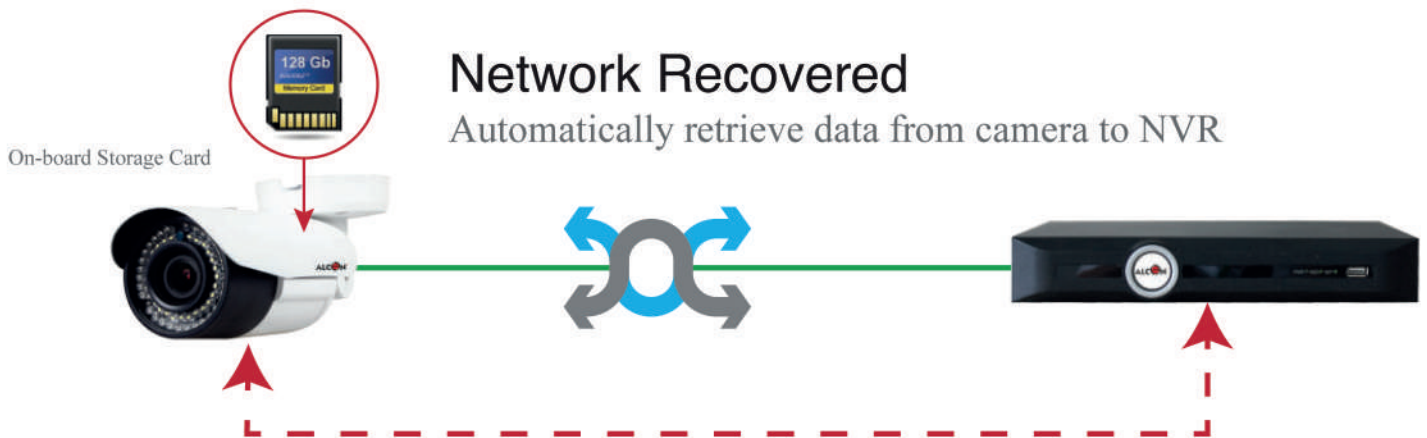
SMART ANALYSIS



BANDWIDTH AND DISK SPACE



S+265 can save approximate 50% bitrate than H.265 technology, saves 70%-80% bandwidth compared with H.264



ANR FEATURES

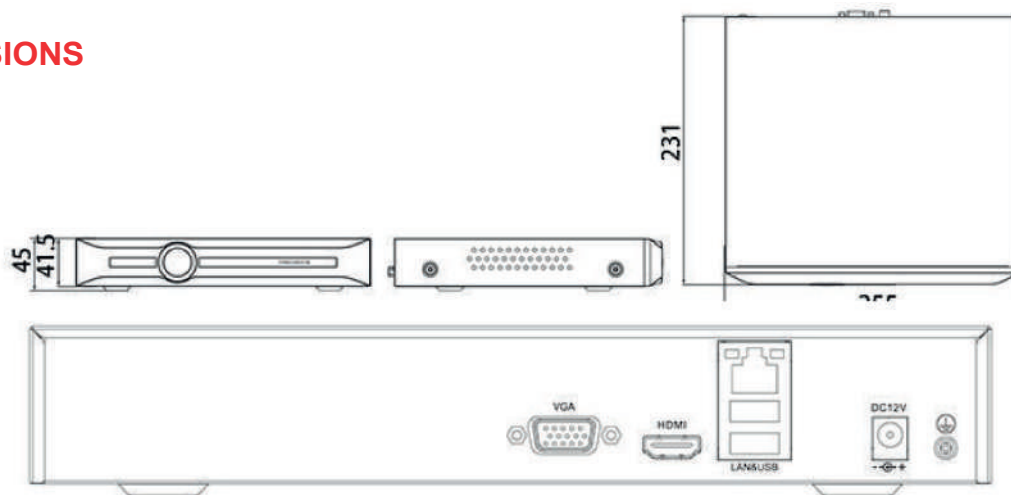
NVRs (Network Video Recorders) with the ANR (Automatic Network Replenishment) function can automatically store video data on the IPC (Internet Protocol Camera) storage card when the network is disconnected. After recovery of the network, the NVR automatically retrieves the video data stored on the camera.

SPECIFICATION

Video and Audio	
Access Channel	20
Incoming Bandwidth	80Mbps
Outgoing Bandwidth	80Mbps
Resolution	8MP/6MP/5MP/4MP/3MP/1080P/UXGA/720P/VGA/4CIF/DCIF/2CIF/CIF/QCIF
Preview decoding capability	8MP*1,6MP*1,5MP*1,4MP*2,3MP*2,1080P*4,720P*8,4CIF*20
Playback decoding capability	8MP*1,6MP*1,5MP*1,4MP*2,3MP*2,1080P*4,720P*8,4CIF*16
Video Output	simultaneous HDMI and VGA outputs
HDMI Output	HDMI:1024*768(60Hz),(720P)1280*720(50Hz/60Hz),1280*800(60Hz),1440*900(60Hz), (1080P)1920*1080(50Hz/60Hz),(4K)3840*2160(30Hz)
VGA Output	VGA:1024*768(60Hz),(720P)1280*720(50Hz/60Hz),1280*800(60Hz),1440*900(60Hz), (1080P)1920*1080(50Hz/60Hz)
Multi-screen Display	1/2/3/4/5/6/7/8/9/10/12/13/16/20A/20B
Third-party Camera Access	ONVIF;RTSP
Audio Output	1-ch,RCA (Linear,1 KΩ)
Two-Way Audio	N/A
Liveview display	Simultaneous Output: VGA: 1/2/3/4/5/6/7/8/9/10/12/13/16/20A/20B HDMI: 1/2/3/4/5/6/7/8/9/10/12/13/16/20A/20B
Compression	
Video	S+265;H.265;S+264;H.264
Audio	G711A;G711U;AAC;ADPCM_DIV4
Stream Type	Video;Video & Audio
Network	
Network Protocol	802.1X;ARP;DDNS;DHCP;DNS;Easy DDNS;FTP;HTTP;HTTPS;ICMP;IGMP;IPv4;IPv6;Multicast; NTP;PPPoE;RTCP;RTP;RTSP;SMTP;SNMP;SRTP;SSH;SSL;TLSv1.2;TLSv1.3; TCP/IP;UDP;Unicast;UPnP
Mobile Phone Access	Android;iOS;P2P_A
System Compatibility	ONVIF(profile T/S/G);CGI;SDK
Web	IE 10+;Firefox52+;Edge89+;Safari11+;Chrome57+
Record Playback	
Multi-channel Playback	16
Record Mode	Manual recording;alarm recording;Schedule recording
Storage	Local HDD/USB storage device
Backup	USB storage device
Playback Function	Play/Pause/Stop/Slow/Speed/Backwards 30s/Forwards 30s/Full screen/backup (video Editing)/Step/Digital Zoom
Alarm	
General Alarm	Motion;Mask Alarm;Alarm Input(IPC);Video Loss
Alert Alarm	IP Conflict;MAC Conflict;Network Disconnected;No disk;Illegal Access;Disk group space alert;Disk Full;Disk R/W error;Video Abnormal;Abnormal found in smart of disk;Abnormal temperature of the disk;IPC voltage abnormal;RTC failure
Intelligent Analytics	
VCA Detection by Camera	Tripwire;Double Tripwire;Perimeter;Object Abandon;Object Missing;Loiter;Running; Parking;Lens Dignose;Scene Switch Dignose;Signal Abnormal Detection;Signal Loss Detection;On Duty Detection;Crowd Detection;People Counting;Face Detection
VCA Search	Early-warning search;Behavior Search;Facial search

External Port	
HDD	1 SATA ports, up to 10TB for a single HDD. The maximum HDD capacity varies with environment temperature
Disk Group	1 Disk Group
USB	2*USB2.0
HDMI	1*HDMI
VGA	1*VGA
RJ-45	1*RJ-45, 10/100 Mbps self-adaptive Ethernet port
SATA	1 SATA interface
General Parameter	
UI Language	English; Spanish; Korean; Italian; Turkish; Russian; Thai; French; Polish; Dutch; Hebrew; Arabic; Vietnamese; German; Ukrainian; Portuguese; Albanian
Power Supply	DC12V 3.3A
Power Consumption	< 10W (HDD not included, idling)
NetWeight	0.8 kg
GrossWeight	1.45 kg
Boundary Dimensions	255(L)231(W)45(H)mm
Package Dimensions	385(L)80(W)280(H)mm
Operating Temperature	-10°C ~ +55°C
Operating Humidity	10%~90%RH
Storage Temperature	-10°C ~ +55°C
Storage Humidity	10%~90%RH
Package Kit	Network Video Recorder; Screw pack; Mouse; Power adapter; European standard power cord
Certification	CE, FCC, BIS & RoHS

DIMENSIONS



ORDERING INFORMATION

AL-NVR5020-1D

S+265 1SATA 20ch 4K NVR



*Product specifications and availability are subject to change without notice. Terms and Conditions Apply.

