

AL-NVR5032-2D

S+265 32CH

2SATA SMART

NVR

- Up to 32-ch Input
- S+265/H.265/H.264 video formats
- Incoming/Outgoing Bandwidth- 260/180Mbps
- Support up to 8MP resolution
- ONVIF (PROFILE S/T/G), SDK, P2P
- 2 SATA interface for 2 HDDs
- Up to 10TB for each HDD
- HDMI and VGA output
- 1xRJ45 10/100/1000 Mbps network interface
- USB Interface 1xUSB 2.0, 1xUSB 3.0
- VCA: Tripwire; Double Tripwire; Perimeter; Object Abandon; Object Missing; Loiter; Running; Parking; Heatmap; Lens Diagnose; Scene Switch Diagnose; Signal Abnormal Detection; Signal Loss Detection; On Duty Detection; Crowd Detection; Safety Helmet Detection; People Counting; Link To Tracking; Face Detection; Human body temperature measurement



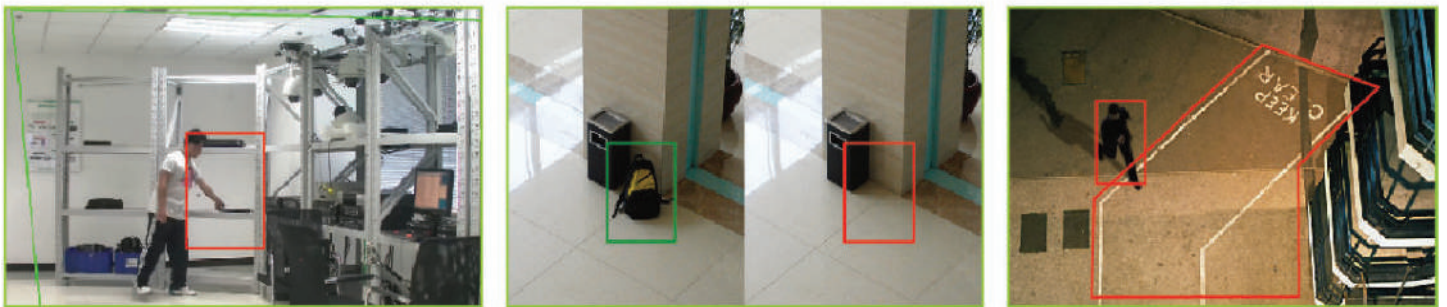
4K NETWORK VIDEO RECORDER

The Alcon AL-NVR5032-2D NVR is for the Smarter generation. It is a Smart Enterprise NVR which supports up to 32ch IP camera input and recording. It Supports Smart Recording, Smart Search. It Supports any 3rd party OEM IP camera with ONVIF compliance. The Alcon Premium Series NVR also supports intelligent video analytics like Face Detection, People Counting and many other features

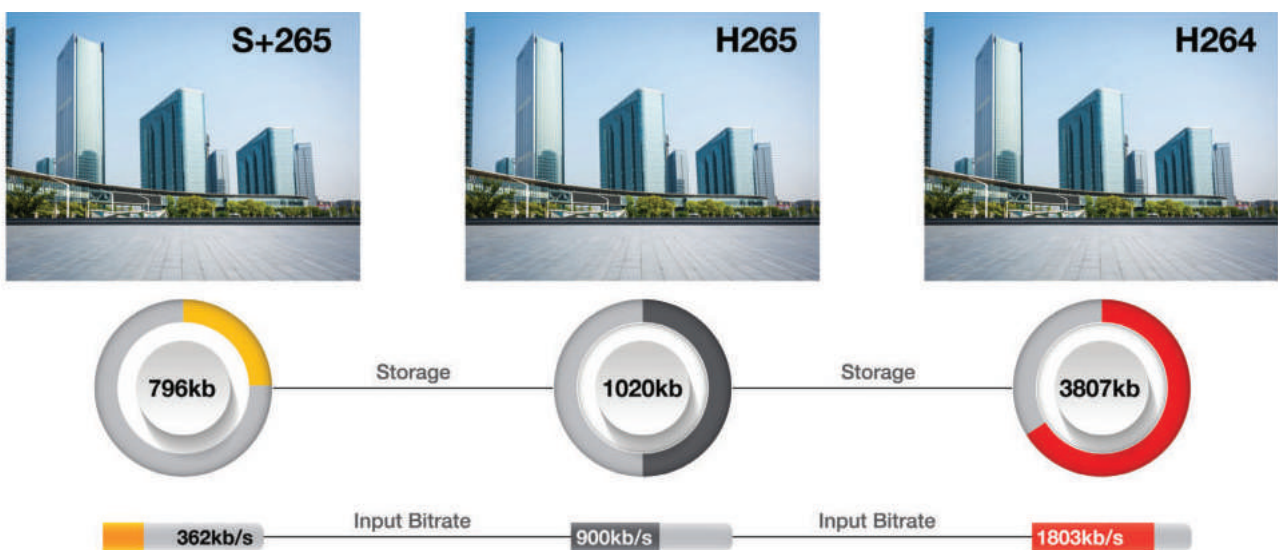
SMART RECORDING



SMART ANALYSIS



BANDWIDTH AND DISK SPACE



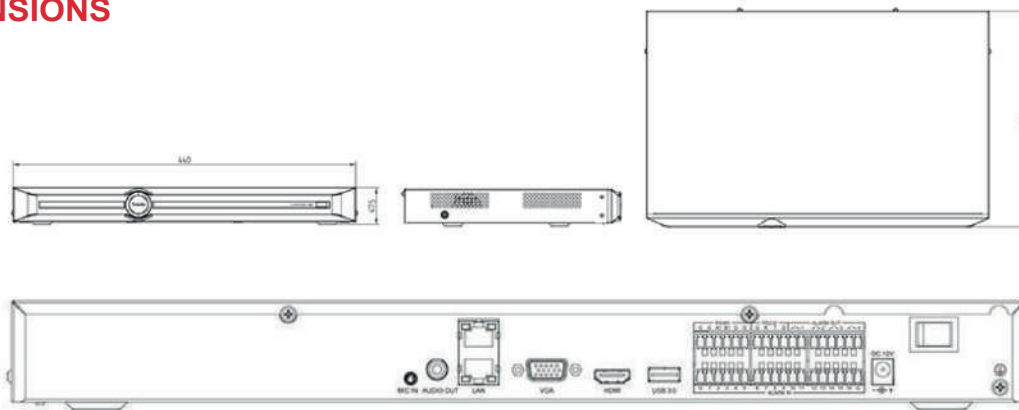
S+265 can save approximate 50% bitrate than H.265 technology, saves 70%-80% bandwidth compared with H.264

SPECIFICATION

Video and Audio	
Access Channel	32
Incoming Bandwidth	160Mbps
Outgoing Bandwidth	48Mbps
Resolution	8MP/6MP/5MP/4MP/3MP/1080P/UXGA/720P/VGA/4CIF/DCIF/2CIF/CIF/QCIF
Preview decoding capability	8MP*2,6MP*2,5MP*3,4MP*4,3MP*5, 1080P*8,720P*16,4CIF*32
Playback decoding capability	8MP*2,6MP*2,5MP*3,4MP*4,3MP*5, 1080P*8,720P*16
Video Output	simultaneous HDMI and VGA outputs
HDMI Output	HDMI: 1024*768(60Hz),(720P) 1280*720(50Hz/60Hz), 1280*800(60Hz), 1440*900(60Hz),(1080P)1920*1080(50Hz/60Hz),(2K)2560*1440(30Hz),(4K)3840*2160(30Hz)
VGA Output	VGA: 1024*768(60Hz),(720P) 1280*720(50Hz/60Hz), 1280*800(60Hz), 1440*900(60Hz),(1080P)1920*1080(50Hz/60Hz)
Multi-screen Display	1/2/3/4/5/6/7/8/9/10/12/13/16/20A/20B/25/32
Third-party Camera Access	ONVIF;RTSP
Audio Input	1-ch,3.5mm
Audio Output	1-ch,RCA (Linear,1 KΩ)
Two-Way Audio	1-ch,3.5mm,using the audio input
Liveview display	Simultaneous Output: VGA: 1/2/3/4/5/6/7/8/9/10/12/13/16/20A/20B/25/32 HDMI: 1/2/3/4/5/6/7/8/9/10/12/13/16/20A/20B/25/32
Compression	
Video	S+265;H.265;S+264;H.264
Audio	G711A;G711U;AAC;ADPCM_DIV4
Stream Type	Video;Video & Audio
Network	
Network Protocol	802.1X;ARP;DDNS;DHCP;DNS;Easy DDNS;FTP;HTTP;HTTPS;ICMP;IGMP;IPv4;IPv6;Multicast;NFS;NTP;PPPoE; RTCP;RTP;RTSP;SMB/CIFS;SMTP;SNMP;SRTP;SSH;SSL;TLSv1.2,TLSv1.3;TCP/IP ;UDP;Unicast;UPnP
Mobile Phone Access	Android;iOS;P2P_A
System Compatibility	ONVIF(profile T/S/G);CGI;SDK
Web	IE 10+;Firefox52+;Edge89+;Safari11+;Chrome57+
Record Playback	
Multi-channel Playback	16
Record Mode	Manual recording;alarm recording;Schedule recording
Storage	Local HDD/USB storage device
Backup	USB storage device
Playback Function	Play/Pause/Stop/Slow/Speed/Backwards 30s/Forwards 30s/Full screen/backup (video Editing)/Step/Digital Zoom
Alarm	
General Alarm	Motion;Mask Alarm;Alarm Input(IPC);Video Loss;Alarm Input(NVR);Manual Alarm
Alert Alarm	IP Conflict;MAC Conflict;Network Disconnected;No disk;Illegal Access;Disk group space alert;Disk Full;Disk R/W error;Video Abnormal; Abnormal found in smart of disk;Abnormal temperature of the disk;Hot-spare Exception;IPC voltage abnormal;RTC failure
Intelligent Analytics	
VCA Detection by Camera	Tripwire;Double Tripwire;Perimeter;Object Abandon;Object Missing;Loiter;Running;Parking;Heatmap;Lens Diagnose;Scene Switch Diagnose; Signal Abnormal Detection;Signal Loss Detection;On Duty Detection;Crowd Detection;Safety Helmet Detection;People Counting; Link To Tracking;Face Detection;Human body temperature measurement
VCA Search	Heatmap;Early-warning search;Behavior Search;Thermographic retrieval;Duty search;Facial search

External Port	
HDD	2 SATA ports, up to 10 TB for a single HDD. The maximum HDD capacity varies with environment temperature
Disk Group	2 Disk Group
USB	2*USB2.0
HDMI	1*HDMI(supports up to 4K resolution output)
VGA	1*VGA
RJ-45	1*RJ-45, 10/100/1000 Mbps self-adaptive Ethernet port
SATA	2 SATA interface
RS232	N/A
RS485	N/A
Alarm I/O	4channel in; 1channel out
General Parameter	
UI Language	Simple Chinese; Traditional Chinese; English; Spanish; Korean; Italian; Turkish; Russian; Thai; French; Polish; Dutch; Hebrew; Arabic; Vietnamese; German; Ukrainian; Portuguese; Albanian
Power Supply	DC12V 3.3A
Power Consumption	< 10W(HDD not included, idling)
NetWeight	1.6 kg
GrossWeight	3kg
Boundary Dimensions	341(L)273(W)47(H)mm
Package Dimensions	415(L)140(W)375(H)mm
Operating Temperature	-10°C~+55°C
Operating Humidity	10%~90%RH
Storage Temperature	-10°C~+55°C
Storage Humidity	10%~90%RH
Package Kit	Network Video Recorder; Screw pack; Mouse; Power adapter; European standard power cord
Certification	CE, FCC, BIS & RoHS

DIMENSIONS



ORDERING INFORMATION

AL-NVR5032-2D

S+265 32CH 2SATA SMART NVR



*Product specifications and availability are subject to change without notice. Terms and Conditions Apply.

