

# AL-NVR5040-16DRAIDHS

## S+265 40CH 12MP 16SATA RAID HOTSWAP NVR

- S+265/H.265/H.264 video formats
- Connectable to the third-party network cameras
- Up to 40 IP cameras can be connected
- Live view and playback Up to 12MP resolution
- 16 SATA interfaces, up to 10TB for each HDD
- Hot Swapble HDDs
- S+265 compression reduces storage space up to 75%
- 2 self-adaptive 10/100/1000Mbps network interfaces
- Centralized management of IP cameras
- Two-way audio communication
- VCA detection alarm is supported
- Web version6, Plug-in-free & supports all browsers
- Heatmap, Auto Tracking & On duty detection
- Smart search for playback area

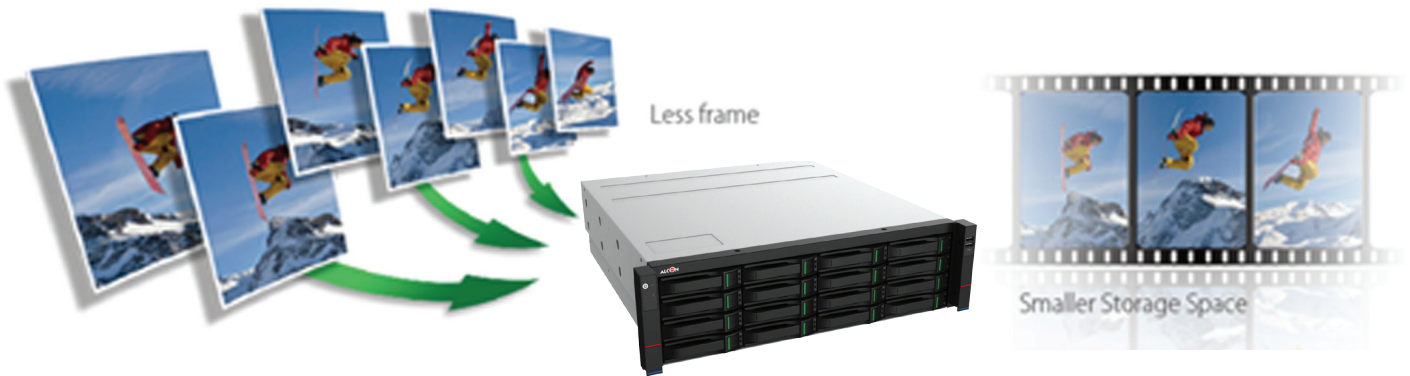




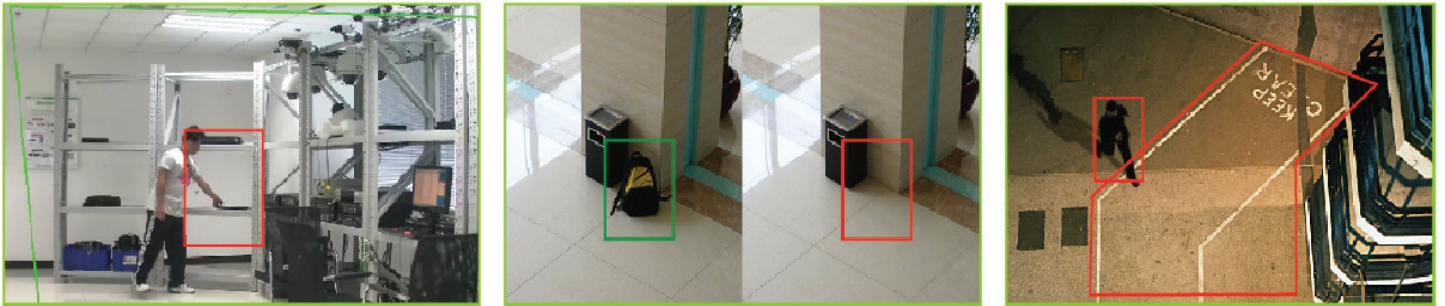
## 4K NETWORK VIDEO RECORDER

The Alcon AL-NVR5040-16DRAIDHS NVR is for the Smarter generation. It is a Smart Enterprise NVR which supports up to 40CH 4K IP camera input and recording. It Supports Smart Recording, Smart Search and Smart Plug and Play. It Supports any 3rd party OEM IP camera with ONVIF compliance. The Alcon Premium Series NVR also supports intelligent video analytics like Face Detection, People Counting and many other features.

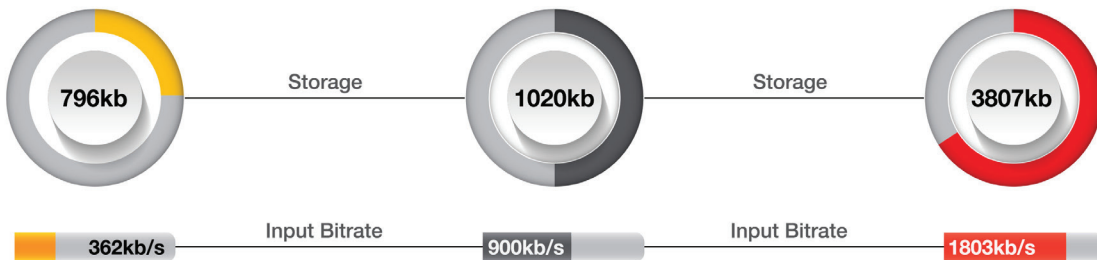
## SMART RECORDING



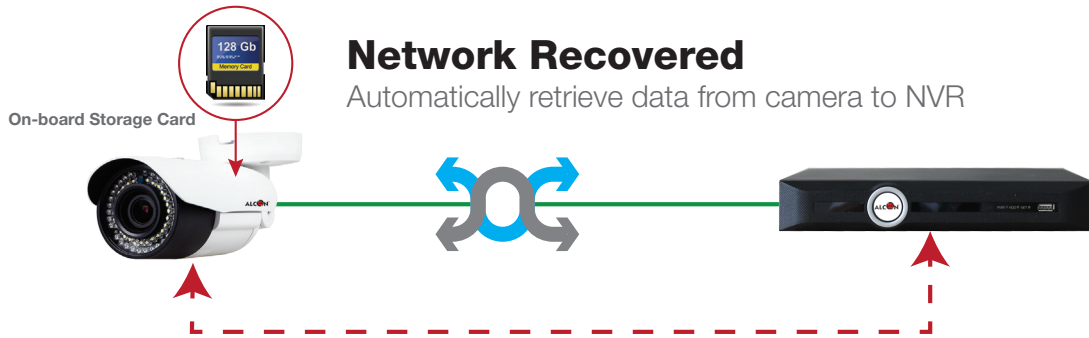
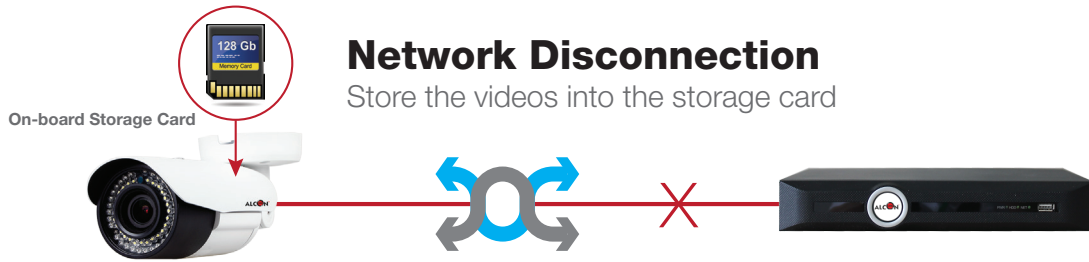
## SMART ANALYSIS



## BANDWIDTH AND DISK SPACE

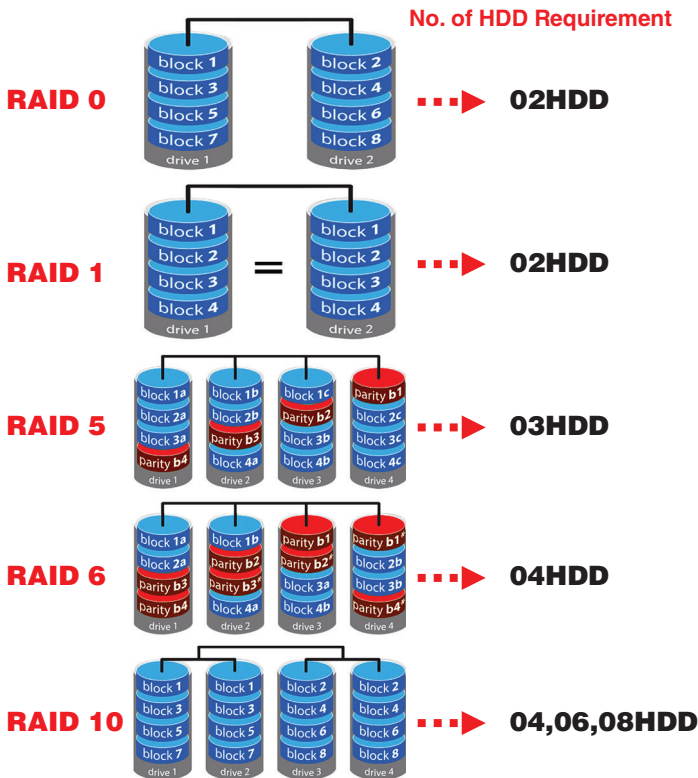


H.265+ can save approximate 50% bitrate than H.265 technology, saves 70%-80% bandwidth compared with H.264



**ANR FEATURES**

NVRs (Network Video Recorders) with the ANR (Automatic Network Replenishment) function can automatically store video data on the IPC (Internet Protocol Camera) storage card when the network is disconnected. After recovery of the network, the NVR automatically retrieves the video data stored on the camera.



**RAID (REDUNDANT ARRAY OF INDEPENDENT DISKS)**

Originally Redundant Array of Inexpensive Disks) is a data storage virtualization technology that combines multiple physical disk drive components into one or more logical units for the purposes of data redundancy, performance improvement, or both. Alcon premium series RAID enabled NVRs are coming with 6 different RAID levels JBOD,RAID0,RAID1,RAID5,RAID6,RAID10 (>0°C, Each Raid Group Supports up to 100Mbps Input). JBOD(Just a Bunch Of Disks) means that your data is on single, stand-alone hard drives. If a one of your JBOD disks fails, the data on that disk is probably lost.

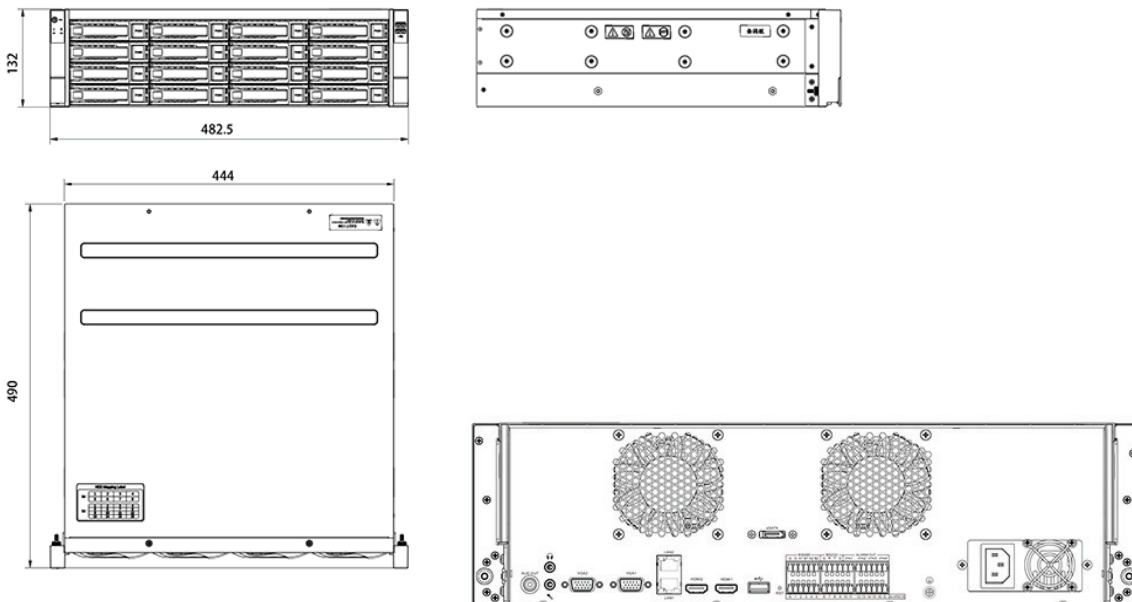
- RAID 0 – striping
- RAID 1 – mirroring
- RAID 5 – striping with parity
- RAID 6 – striping with double parity
- RAID 10 – combining mirroring and striping

**SPECIFICATION**

<b>MODEL</b>		<b>AL-NVR5040-16DRAIDHS</b>
<b>INPUT</b>		
Video Input		40-ch
Max Resolution		12MP
Two-way Audio Input		1-ch, 3.5mm
Bandwidth		Income 320Mbps; Outgoing 320Mbps
<b>OUTPUT</b>		
HDMI/VGA Output		HDMI 2-ch, 3840×2160, 2560×1600, 2560×1440, 1920×1080, 1280×720, 800×600, 1024×768, 1366×768, 1440×900, 1280×800
		VGA 2-ch, 1920×1080, 1280×720, 800×600, 1024×768, 1366×768, 1440×900, 1280×800
Screen Split		1/3/4/6/8/9/10/13/16/20/25/36/40/64
Audio Output		1x3.5mm, 1xBNC
<b>DECODING</b>		
Decoding Format		S+265H.265/H.264
Recording Resolution		12MP/8MP/6MP/5MP/4MP/3MP/1080P/UX-GA/720P/VGA/4CIF/DCIF/2CIF/CIF/QCIF
Preview Capability		3×12MP, 4×8MP, 4×6MP, 5×5MP, 8×4MP, 9×3MP, 16×1080P, 32×720P, 64×4CIF
Synchronous Playback		3×12MP, 4×8MP, 4×6MP, 5×5MP, 8×4MP, 9×3MP, 16×1080P, 16×720P
Records Encryption		Yes
<b>HARD DISK</b>		
SATA		16 SATA interfaces for 16 HDDs
Capacity		Up to 10TB for each HDD
eSATA Interface		1 SATA interface
Array Type		JBOD, RAID0/1/5/6/10
Hot Swapable HDDs		Yes
<b>EXTERNAL INTERFACE</b>		
Network Interface		2xRJ45 self-adaptive 10/100/1000 Mbps network interfaces
USB Interface		2xUSB 2.0, 1xUSB 3.0
Serial Interface		2xRS-485, 1xRS-232
Alarm In/Out		16/4

<b>NETWORK</b>		
TC-R3105 Spec: I/B/P4/K		
Protocol		TCP/IP, ICMP, HTTP, HTTPS, FTP, DHCP, DNS, DDNS, RTP, RTSP, RTCP, PPPoE, NTP, UPnP, SMTP, IGMP, QoS, IPV4, IPV6, Multicast, ARP, UDP, SNMP, SSL, Telnet, RTMP, NFS
System Compatibility		ONVIF (PROFILE S/T/G), SDK, P2P
Client		Alcon Smart Surveillance, EasyLive
<b>FEATURES</b>		
VCA		Tripwire, Double Tripwire, Perimeter, Object Abandon, Object Lost, Loitering, Parking, Early Warning, Face Detection, Compatible with face recognition camera, crowd, On duty detection, Video abnormal, Audio Abnormal, Heatmap, Auto Tracking, Safety Helmet Detection
ANR		Yes
Hot Standby		N+M
<b>GENERAL</b>		
Web Version		WEB6
Language		English, Spanish, Korean, Italian, Turkish, Russian, Thai, French, Polish, Dutch, Hebrew, Arabic(only for UI) Vietnamese(only for IE)
Operating Conditions		-10 °C~+55°C (+14 °F~ + 131 °F)
Power Supply		AC100~240V, 50/60HZ
Redundant Power		N/A
Consumption (without HDD)		≤100W (without HDD)
Chassis		3U
Dimensions		132×482.6×490mm, (5.2×19×19.29 inch)
Weight (without HDD)		11.35Kg (25.02lb)
Certification		CE & FCC

**DIMENSIONS**



**ORDERING INFORMATION**

AL-NVR5040-16DRAIDHS

S+265 40CH 12MP 16SATA RAID HOTSWAP NVR



\*Product specifications and availability are subject to change without notice.