

**AL-NVR5040-2D**

# S+265 40CH 4K 2SATA SMART NVR

- Up to 40-ch Input
- S+265/H.265/H.264 video formats
- Income & Outgoing Bandwidth 320/320Mbps
- Support up to 12MP resolution
- ONVIF (PROFILE S/T/G), SDK, P2P
- 2 SATA interface for 2 HDDs
- Up to 10TB for each HDD
- HDMI and VGA simultaneous output
- Video output at up to 4K (3840×2160) resolution
- 2xRJ45 10/100/1000 Mbps network interface
- Support ANR & Hotstandby N+M
- USB Interface 1xUSB 2.0, 1xUSB 3.0
- Alarm In/Out 16/4
- Serial Interface 1xRS-485, 1xRS-232
- Support video analytics
- Support Early Warning, Heatmap & Auto Tracking



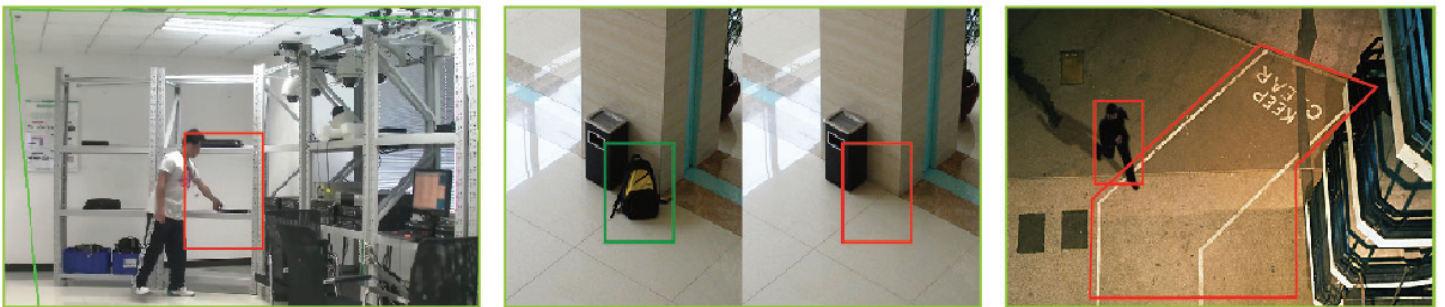
## 4K NETWORK VIDEO RECORDER

The Alcon AL-NVR5040-2D NVR is for the Smarter generation. It is a Smart Enterprise NVR which supports up to 40ch 4K IP camera input and recording. It Supports Smart Recording, Smart Search. It Supports any 3rd party OEM IP camera with ONVIF compliance. The Alcon Premium Series NVR also supports intelligent video analytics like Face Detection, People Counting and many other features.

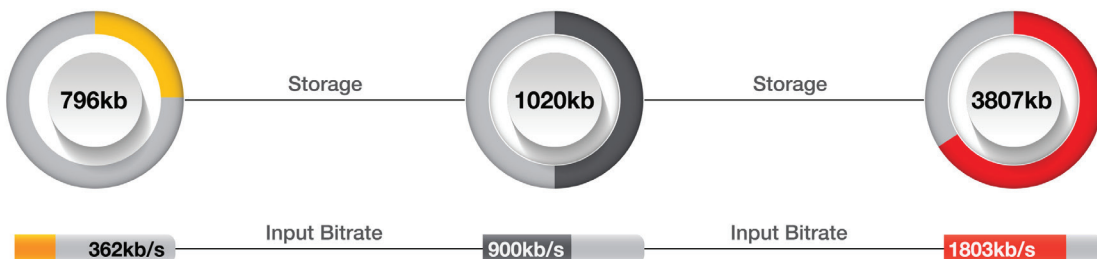
## SMART RECORDING



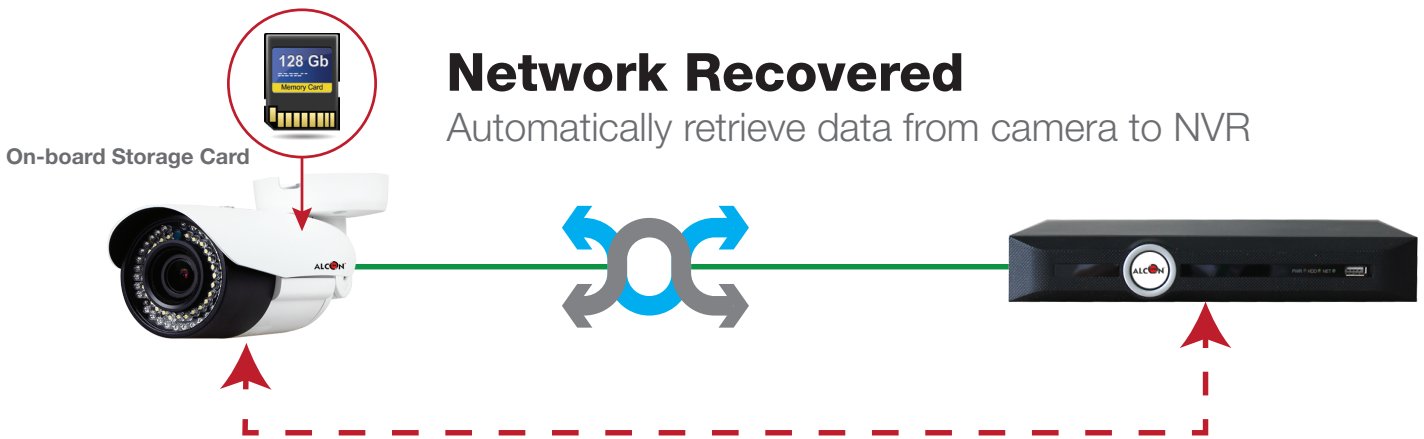
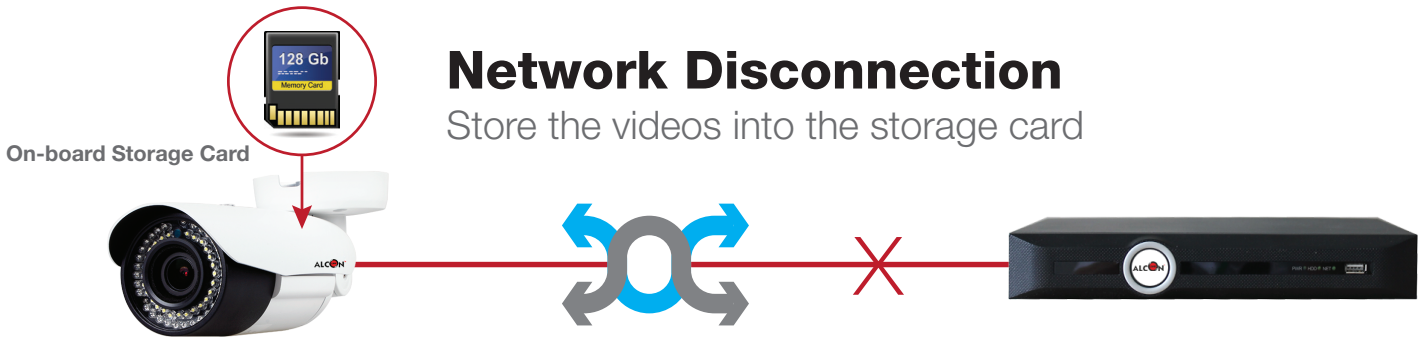
## SMART ANALYSIS



## BANDWIDTH AND DISK SPACE



H.265+ can save approximate 50% bitrate than H.265 technology, saves 70%-80% bandwidth compared with H.264

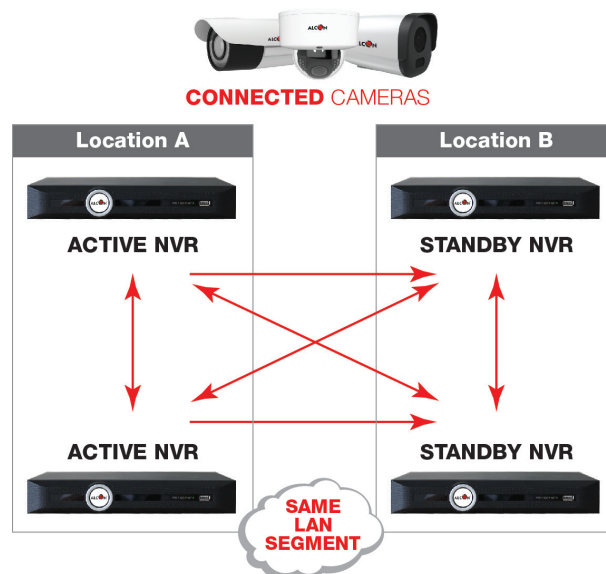


**ANR FEATURES**

NVRs (Network Video Recorders) with the ANR (Automatic Network Replenishment) function can automatically store video data on the IPC (Internet Protocol Camera) storage card when the network is disconnected. After recovery of the network, the NVR automatically retrieves the video data stored on the camera.

**HOTSTANDBY N+M**

N+M — In cases where a single NVR is working as standby of multiple active NVRs, having only one dedicated failover node might not offer sufficient redundancy. In such cases, more than one (M) standby NVRs are included and available. The number of standby NVRs is a tradeoff between cost and reliability requirements

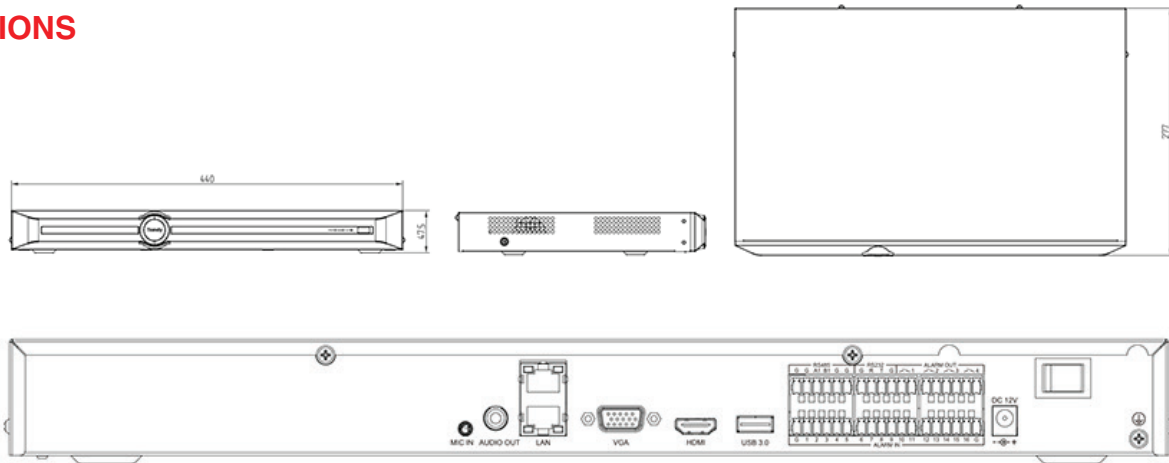


**SPECIFICATION**

|                           |  |
|---------------------------|--|
| <b>MODEL</b>              | <b>AL-NVR5040-2D</b>   |
| <b>INPUT</b>              |  |
| Video Input               | 40-ch  |
| Max Resolution            | 12MP   |
| Two-way Audio Input       | 1-ch, 3.5mm  |
| Bandwidth                 | Income 320Mbps; Outgoing 320Mbps   |
| <b>OUTPUT</b>             |  |
| HDMI/VGA Output           | HDMI 1-ch, 3840×2160, 2560×1600, 2560×1440, 1920×1080, 1280×720, 800×600, 1024×768, 1366×768, 1440×900, 1280×800 |
|                           | VGA 1-ch, 1920×1080, 1280×720, 800×600, 1024×768, 1366×768, 1440×900, 1280×800                                   |
| Screen Split              | 1/3/4/6/8/9/10/13/16/20/25/36/40/64  |
| Audio Output              | 1×RCA  |
| <b>DECODING</b>           |  |
| Decoding Format           | S+265/H.265/H.264  |
| Recording Resolution      | 12MP/8MP/6MP/5MP/4MP/3MP/1080P/UXGA/720P/VGA/4CIF/DCIF/2CIF/CIF/QCIF   |
| Preview Capability        | 3×12MP, 4×8MP, 4×6MP, 5×5MP, 8×4MP, 9×3MP, 16×1080P, 32×720P, 40×4CIF  |
| Synchronous Playback      | 3×12MP, 4×8MP, 4×6MP, 5×5MP, 8×4MP, 9×3MP, 16×1080P, 16×720P   |
| Records Encryption        | Yes  |
| <b>HARD DISK</b>          |  |
| SATA                      | 2 SATA interfaces for 2 HDDs   |
| Capacity                  | Up to 10TB for each HDD  |
| eSATA Interface           | N/A  |
| Array Type                | N/A  |
| <b>EXTERNAL INTERFACE</b> |  |
| Network Interface         | 2×RJ45 self-adaptive 10/100/1000 Mbps network interfaces   |
| USB Interface             | 1×USB 2.0, 1×USB 3.0   |
| Serial Interface          | 1×RS-485, 1×RS-232   |
| Alarm In/Out              | 16/4   |

|                           |  |
|---------------------------|--|
| <b>NETWORK</b>            |  |
| Protocol                  | TCP/IP, ICMP, HTTP, HTTPS, FTP, DHCP, DNS, DDNS, RTP, RTSP, RTCP, PPPoE, NTP, UPnP, SMTP, IGMP, QoS, IPV4, IPV6, Multicast, ARP, UDP, SNMP, SSL, Telnet, RTMP, NFS                                   |
| System Compatibility      | ONVIF (PROFILE S/T/G), SDK, P2P  |
| <b>FEATURES</b>           |  |
| ANR                       | Yes  |
| Hot Standby               | Yes  |
| VCA                       | Tripwire/Double Tripwire/Perimeter/Object Abandon/Object Lost/Running/On Duty Detection/Loitering/Parking/Early Warning/Face Detection/Compatible With Face Recognition Camera/Heatmap/Auto Tracking |
| <b>GENERAL</b>            |  |
| Web Version               | Web6   |
| Language                  | Simple Chinese, Traditional Chinese, English, Spanish, Korean, Italian, Turkish, Russian, Thai, French, Polish, Dutch, Hebraism, Arabic  |
| Operating Conditions      | -10°C ~55°C, 10%~90% RH  |
| Power Supply              | 100~240V AC, 50~60 Hz  |
| Consumption (without HDD) | ≤25W (without HDD)   |
| Chassis                   | 1U   |
| Dimensions                | 47.5×277×440mm, (1.87×10.91×17.32 inch)  |
| Weight (without HDD)      | 2.3Kg (5.07lb)   |
| Certification             | BIS, CE & FCC  |

**DIMENSIONS**



**ORDERING INFORMATION**

AL-NVR5040-2D

S+265 40CH 4K 4SATA RAID NVR



\*Product specifications and availability are subject to change without notice. Terms and Conditions Apply.

