

AL-NVR5040-8DRAID

S+265 40CH 12MP 8SATA RAID NVR

RAID ENABLED, DUAL HDMI & DUAL ETHERNET INTERFACE

- S+265/H.265/H.264 video formats
- Connectable to the third-party network cameras
- Up to 40 IP cameras can be connected
- Live view and playback Up to 12MP resolution
- 8 SATA interfaces, up to 10TB for each HDD
- S+265 compression reduces storage space up to 75%
- 2 self-adaptive 10/100/1000Mbps network interfaces
- Centralized management of IP cameras
- Two-way audio communication
- VCA detection alarm is supported
- Web version6, Plug-in-free & supports all browsers
- Heatmap, Auto Tracking & On duty detection
- Smart search for playback area
- Certification: BIS, CE & FCC



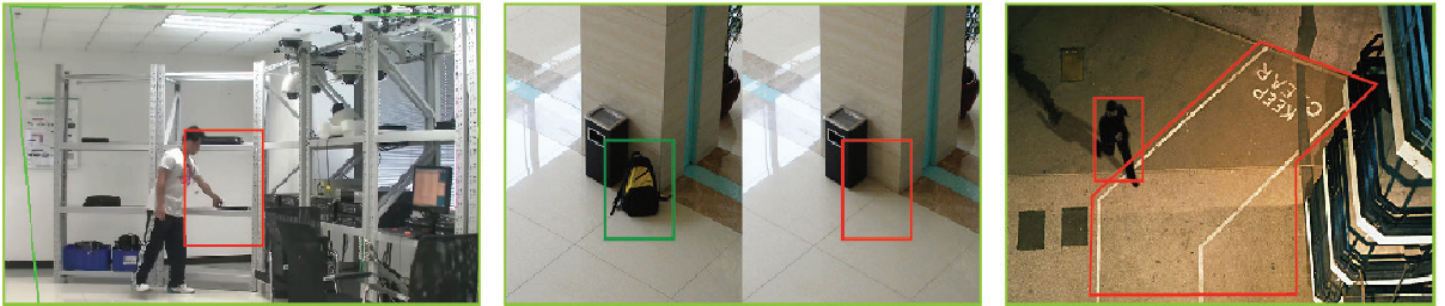
12MP NETWORK VIDEO RECORDER

The Alcon AL-NVR5040-8DRAID NVR is for the Smarter generation. It is a Smart Enterprise NVR which supports up to 40CH 12MP IP camera input and recording. It Supports Smart Recording, Smart Search and Smart Plug and Play. It Supports any 3rd party OEM IP camera with ONVIF compliance. The Alcon Premium Series NVR also supports intelligent video analytics like Face Detection, People Counting and many other features.

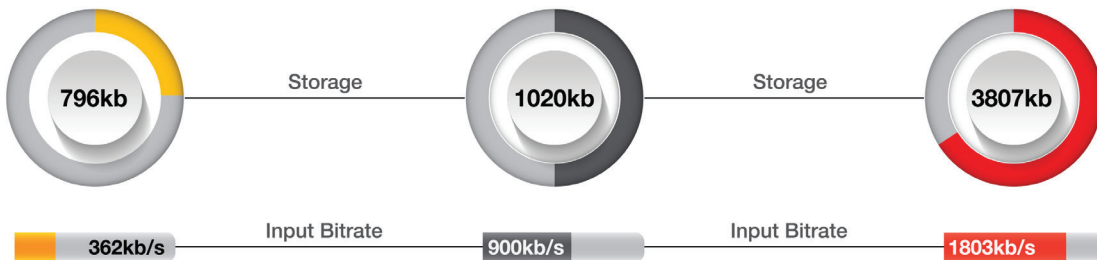
SMART RECORDING



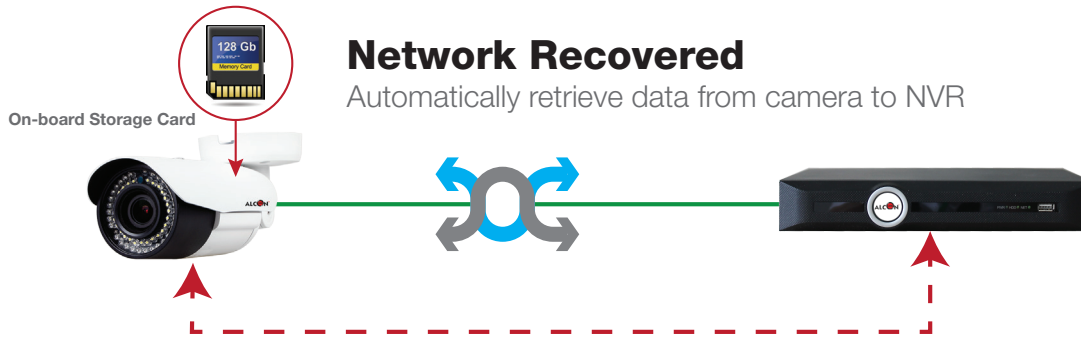
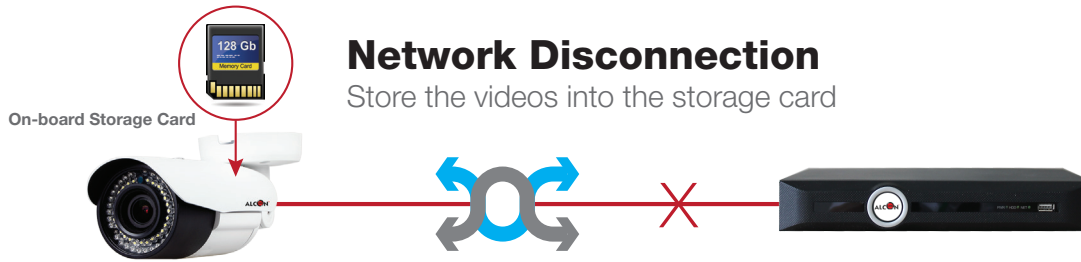
SMART ANALYSIS



BANDWIDTH AND DISK SPACE

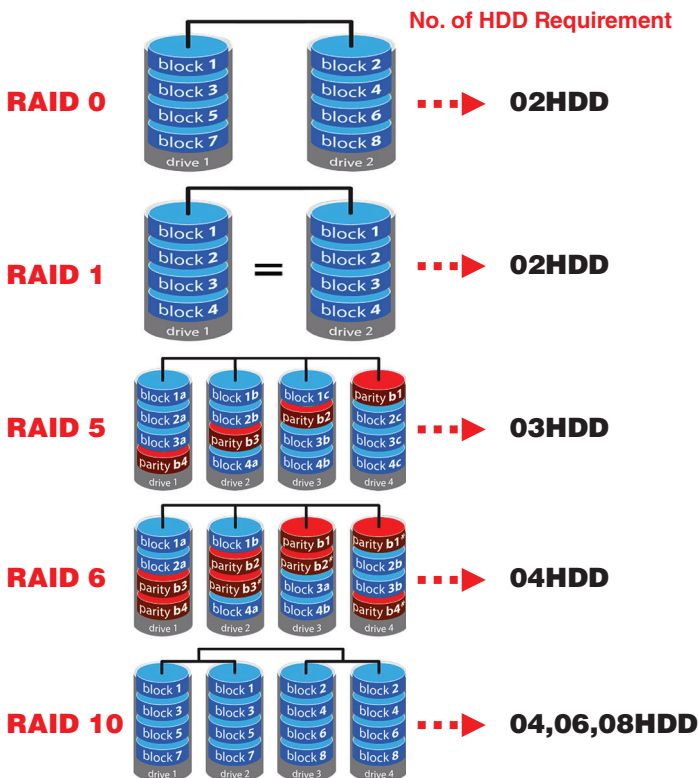


H.265+ can save approximate 50% bitrate than H.265 technology, saves 70%-80% bandwidth compared with H.264



ANR FEATURES

NVRs (Network Video Recorders) with the ANR (Automatic Network Replenishment) function can automatically store video data on the IPC (Internet Protocol Camera) storage card when the network is disconnected. After recovery of the network, the NVR automatically retrieves the video data stored on the camera.



RAID (REDUNDANT ARRAY OF INDEPENDENT DISKS)

Originally Redundant Array of Inexpensive Disks) is a data storage virtualization technology that combines multiple physical disk drive components into one or more logical units for the purposes of data redundancy, performance improvement, or both. Alcon premium series RAID enabled NVRs are coming with 6 different RAID levels JBOD,RAID0,RAID1,RAID5,RAID6,RAID10 (>0°C, Each Raid Group Supports up to 100Mbps Input). JBOD(Just a Bunch Of Disks) means that your data is on single, stand-alone hard drives. If a one of your JBOD disks fails, the data on that disk is probably lost.

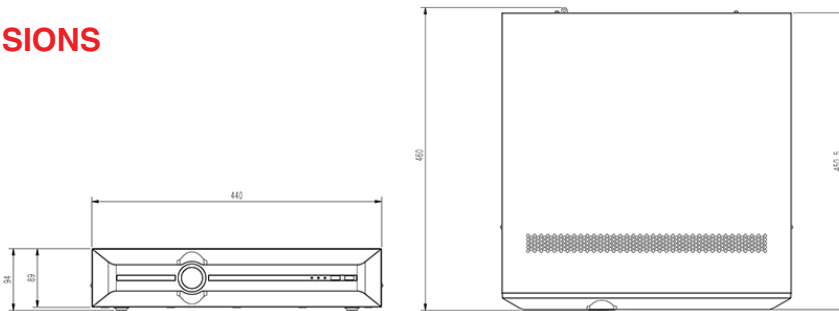
- RAID 0 – striping
- RAID 1 – mirroring
- RAID 5 – striping with parity
- RAID 6 – striping with double parity
- RAID 10 – combining mirroring and striping

SPECIFICATION

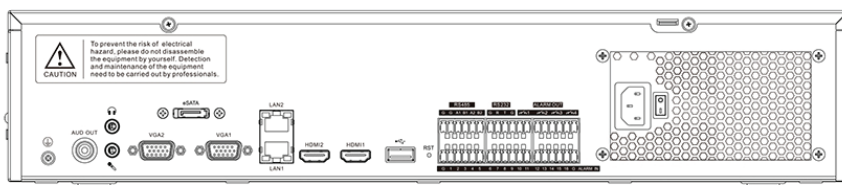
MODEL	AL-NVR5040-8DRAID
INPUT	
Video Input	40-ch
Max Resolution	12MP
Two-way Audio Input	1-ch, 3.5mm
Bandwidth	Income 320Mbps; Outgoing 320Mbps
OUTPUT	
HDMI/VGA Output	HDMI 2-ch, 3840×2160, 2560×1600, 2560×1440, 1920×1080, 1440×900, 1366×768, 1280×800, 1280×720, 1024×768, 800×600
	VGA 2-ch, 1920×1080, 1440×900, 1366×768, 1280×800, 1280×720, 1024×768, 800×600
Screen Split	1/3/4/6/8/9/10/13/16/20A/20B/25/32/36/40/64
Audio Output	1x3.5mm, 1xBNC
DECODING	
Decoding Format	S+265H.265/H.264
Recording Resolution	12MP/8MP/6MP/5MP/4MP/3MP/1080P/UXGA/720P/VGA/4CIF/DCIF/2CIF/CIF/QCIF
Preview Capability	2×12MP, 4×8MP, 4×6MP, 5×5MP, 8×4MP, 9×3MP, 16×1080P, 32×720P, 40×4CIF
Synchronous Playback	2×12MP, 4×8MP, 4×6MP, 5×5MP, 8×4MP, 9×3MP, 16×1080P, 16×720P
Records Encryption	Yes
HARD DISK	
SATA	8 SATA interfaces for 8 HDDs
Capacity	Up to 10TB for each HDD
eSATA Interface	1 SATA interface
Array Type	JBOD, RAID0/1/5/6/10
EXTERNAL INTERFACE	
Network Interface	2xRJ45 self-adaptive 10/100/1000 Mbps network interfaces
USB Interface	2xUSB 2.0, 1xUSB 3.0
Serial Interface	2xRS-485, 1xRS-232
Alarm In/Out	16/4

NETWORK	
Protocol	TCP/IP, ICMP, HTTP, HTTPS, FTP, DHCP, DNS, DDNS, RTP, RTSP, RTCP, PPPoE, NTP, UPnP, SMTP, IGMP, QoS, IPV4, IPV6, Multicast, ARP, UDP, SNMP, SSL, Telnet, RTMP, NFS
System Compatibility	ONVIF (PROFILE S/T), SDK, P2P
Client	Alcon Smart Surveillance, EasyLive
FEATURES	
VCA	Tripwire, Double Tripwire, Perimeter, Object Abandon, Object Lost, Loitering, Parking, Early Warning, Face Detection, Compatible with face recognition camera, crowd, On duty detection, Video abnormal, Audio Abnormal, Heatmap, Auto Tracking, Safety Helmet Detection
ANR	Yes
Hot Standby	N+M
GENERAL	
Web Version	WEB6
Language	Simple Chinese, Traditional Chinese, English, Spanish, Korean, Italian, Turkish, Russian, Thai, French, Polish, Dutch, Hebrew, Arabic, Vietnamese
Operating Conditions	-10°C~+55°C, 10%~90% RH
Power Supply	AC100~240V, 50/60HZ
Redundant Power	N/A
Consumption (without HDD)	≤80W (without HDD)
Chassis	2U
Dimensions	94×440×460mm, (3.7×17.32×18.11 inch)
Weight (without HDD)	7.2Kg (15.87lb)
Certification	BIS, CE & FCC

DIMENSIONS



Physical Interfaces



ORDERING INFORMATION

AL-NVR5040-8DRAID

S+265 40CH 12MP 8SATA RAID NVR



*Product specifications and availability are subject to change without notice.

