

AL-NVR5080-16DRAIDHS-R

80CH

16MP 16SATA RAID

HOTSWAP WITH REDUNDANT
POWER NVR

- S+265/H.265/H.264 video formats
- Connectable to the third-party network cameras
- Up to 80 IP cameras can be connected
- Live view and playback Up to 16MP resolution
- 16 SATA interfaces, up to 24TB for each HDD
- Hot Swapable HDDs
- S+265 compression reduces storage space up to 75%
- 2 self-adaptive 10/100/1000Mbps network interfaces
- Centralized management of IP cameras
- Two-way audio communication
- VCA detection alarm is supported
- Web version 6, Plug-in-free & supports all browsers
- Heatmap, AutoTracking & On duty detection
- Smart search for playback area



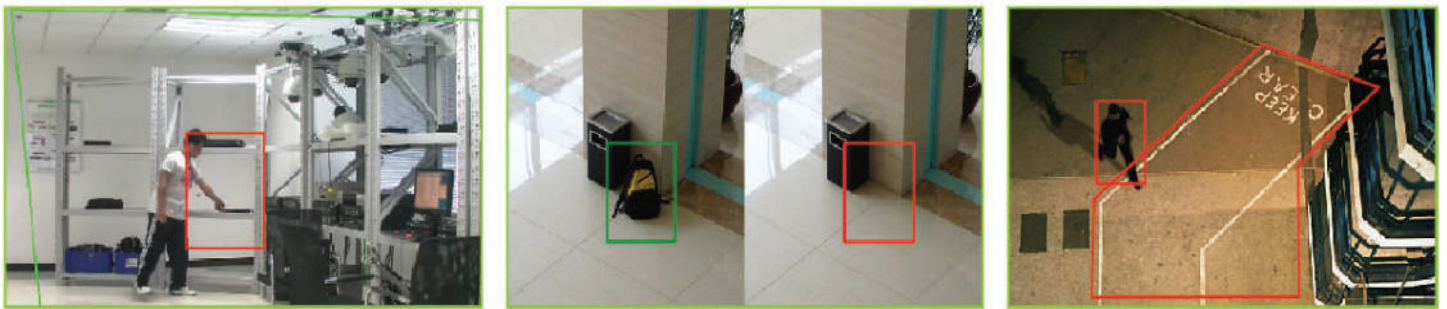
4K NETWORK VIDEO RECORDER

The Alcon AL-NVR5080-16DRAIDHS-R NVR is for the Smarter generation. It is a Smart Enterprise NVR which supports up to 80ch 4K IP camera input and recording. It Supports Smart Recording, Smart Search and Smart Plug and Play. It Supports any 3rd party OEM IP camera with ONVIF compliance. The Alcon Premium Series NVR also supports intelligent video analytics like Face Detection, People Counting and many other features.

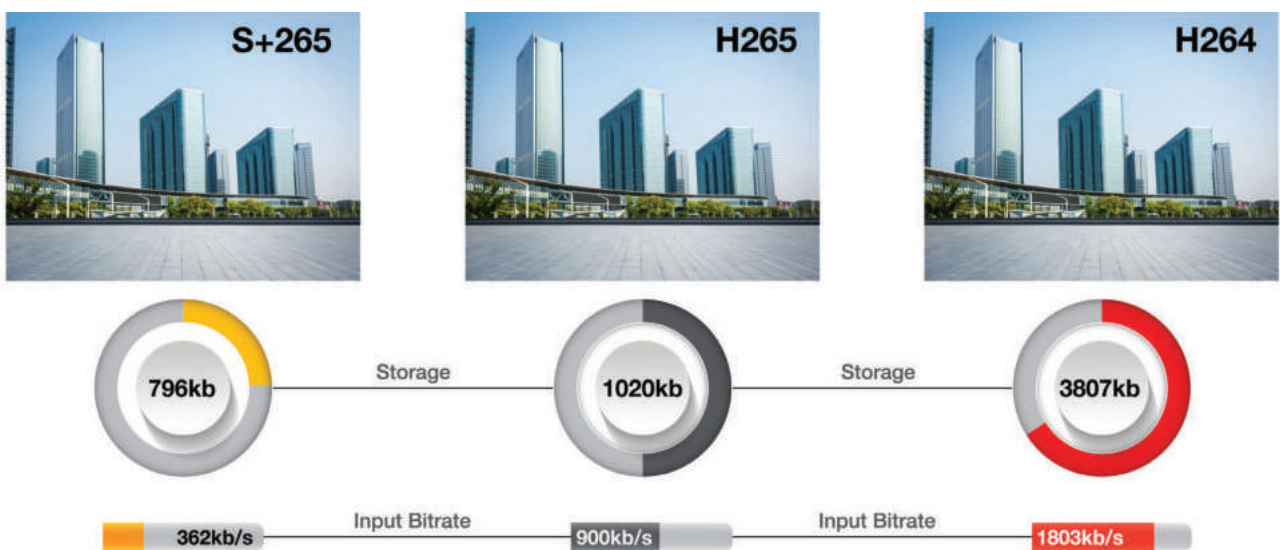
SMART RECORDING



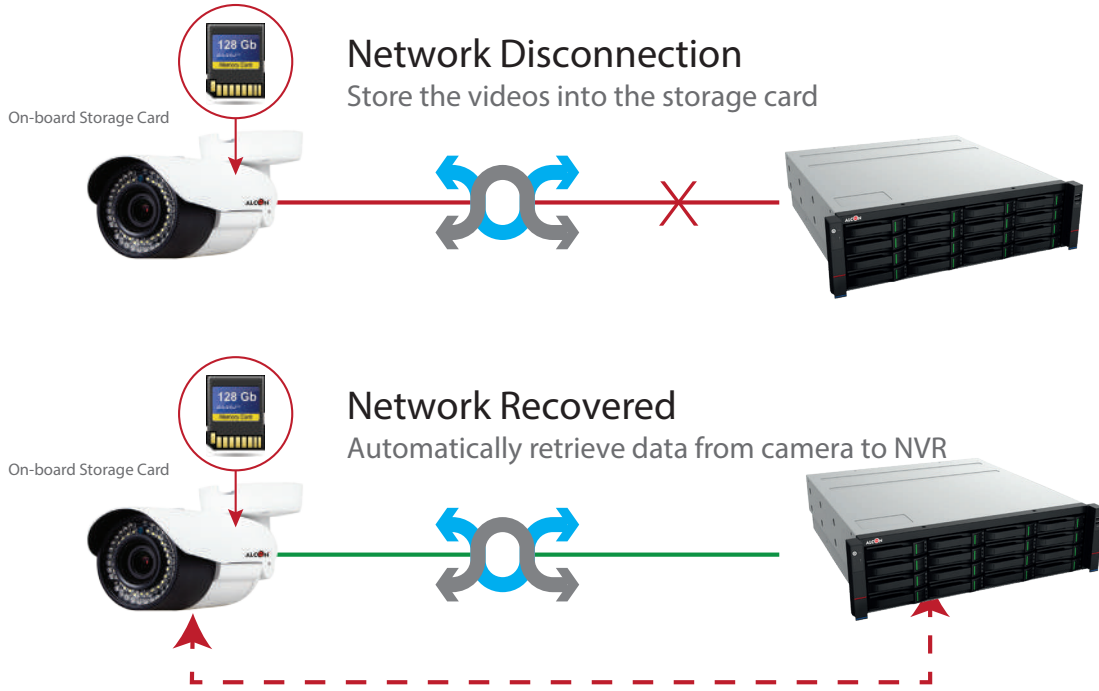
SMART ANALYSIS



BANDWIDTH AND DISK SPACE

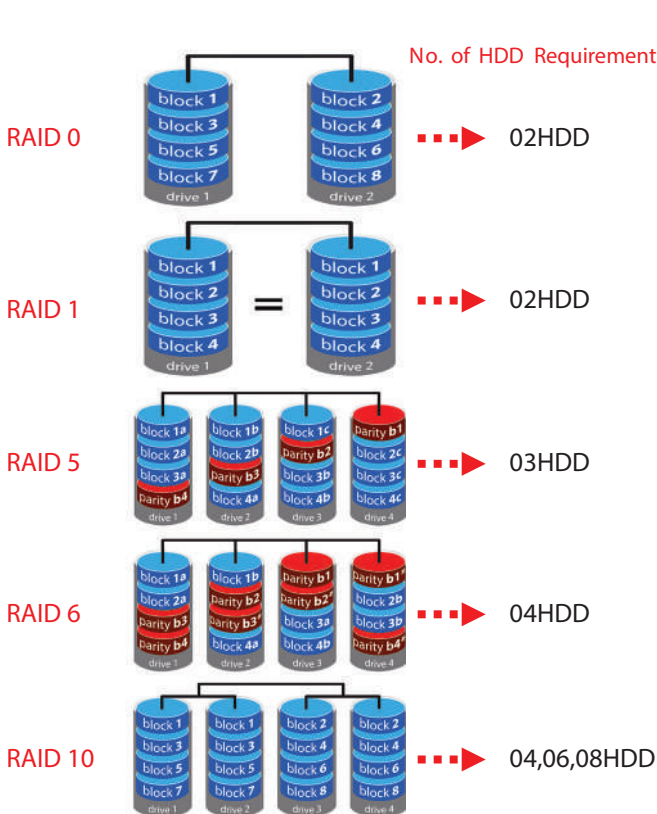


S+265 can save approximate 50% bitrate than H.265 technology, saves 70%-80% bandwidth compared with H.264



ANR Features

NVRs (Network Video Recorders) with the ANR (Automatic Network Replenishment) function can automatically store video data on the IPC (Internet Protocol Camera) storage card when the network is disconnected. After recovery of the network, the NVR automatically retrieves the video data stored on the camera.



RAID (Redundant Array of Independent Disks)

Originally Redundant Array of Inexpensive Disks) is a data storage virtualization technology that combines multiple physical disk drive components into one or more logical units for the purposes of data redundancy, performance improvement, or both. Alcon premium series RAID enabled NVRs are coming with 6 different RAID levels JBOD,RAID0,RAID1,RAID5,RAID6,RAID10 (>0°C, Each Raid Group Supports up to 100Mbps Input). JBOD(Just a Bunch Of Disks) means that your data is on single, stand-alone hard drives. If a one of your JBOD disks fails, the data on that disk is probably lost.

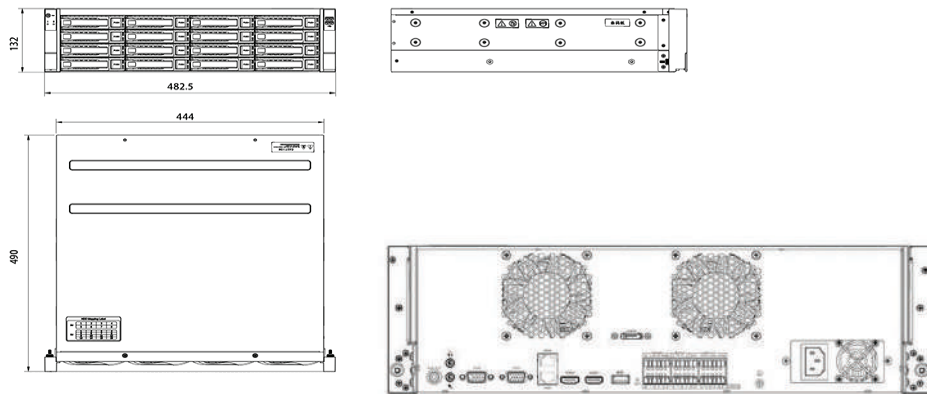
- RAID 0 – striping
- RAID 1 – mirroring
- RAID 5 – striping with parity
- RAID 6 – striping with double parity
- RAID 10 – combining mirroring and striping

SPECIFICATION

Video and Audio	
Access Channel	80
Incoming Bandwidth	640Mbps
Outgoing Bandwidth	320Mbps
Resolution	16MP/12MP/8MP/6MP/5MP/4MP/3MP/1080P/UXGA/720P/VGA/4CIF/DCIF/2CIF/CIF/QCIF
Preview Decoding Capability	16MP(30fps)×3, 12MP(30fps)×4, 8MP(30fps)×6, 6MP(30fps)×8, 5MP(30fps)×9, 4MP(30fps)×12, 3MP(30fps)×16, 1080P(30fps)×24, 720P(30fps)×48, 4CIF(30fps)×80
Playback Decoding Capability	16MP(30fps)×3, 12MP(30fps)×4, 8MP(30fps)×6, 6MP(30fps)×8, 5MP(30fps)×9, 4MP(30fps)×12, 3MP(30fps)×16, 1080P(30fps)×16, 720P(30fps)×16
Third-party Camera Access	ONVIF; RTSP
HDMI Output	HDMI: 800×600(60Hz), 1024×768(60Hz), 1280×720(50Hz/60Hz), 1280×800(60Hz), 1366×768(60Hz), 1440×900(60Hz), 1920×1080(50Hz/60Hz), 2560×1440(30Hz/60Hz), 2560×1600(60Hz), (4K)3840×2160(30Hz/60Hz)
VGA Output	VGA: 800×600(60Hz), 1024×768(60Hz), 1280×720(50Hz/60Hz), 1280×800(60Hz), 1366×768(60Hz), 1440×900(60Hz), 1920×1080(50Hz/60Hz)
Multi-screen Display	Independent Output: HDMI1/VGA1: 1/2/3/4/5/6/7/8/9/10/12/13/16/20A/20B/25/32/36/40/64/80 HDMI2/VGA2: 1/2/3/4/5/6/7/8/9/10/12/13/16/20A/20B/25/32/36/40/64/80
Audio Input	1-ch, 3.5mm
Audio Output	1-ch, 3.5mm; BNC
Two-Way Audio	1-ch, 3.5mm, using the audio input
Compression	
Video	S+265; H.265; S+264; H.264
Audio	G711A; G711U; AAC; ADPCM_DIV4
Stream Type	Video; Video & Audio
Network	
Network Protocol	ARP; DDNS; DHCP; DNS; Easy DDNS; FTP; HTTP; HTTPS; ICMP; IGMP; IPv4; IPv6; Multicast; NFS; NTP; PPPoE; RTCP; RTP; RTSP; SMB/CIFS; SMTP; SNMP v1; SRTP; SSH; SSL; TLSv1.2, TLSv1.3; TCP/IP; UDP; Unicast; UPnP
Mobile Phone Access	Android; iOS; P2P
System Compatibility	ONVIF(Profile S/T/G); RTSP; CGI; SDK
Web	IE10+; Firefox52+; Edge89+; Safari11+; Chrome57+
Record Playback	
Multi-channel Playback	16
Record Mode	Manual Recording; Alarm Recording; Schedule Recording
Storage Method	Local HDD, eSATA
Backup	USB storage device, eSATA, Network
Playback Function	Play/Pause/Stop/Slow/Speed/Backwards 30s/Forwards 30s/Full Screen/Backup (Video Editing)/Step/Digital Zoom
Dual Stream Record	Yes
Alarm	
General Alarm	Motion Detection; Mask Alarm; Alarm Input(IPC); Alarm Input(NVR); Manual Alarm
Exceptions Alarm	Video Loss; IP Conflict; MAC Conflict; Network Disconnected; No Disk; Illegal Access; Disk group space alert; Disk Full; Disk R/W Error; Recording Abnormal; Abnormal found in smart of disk; Abnormal temperature of the disk; Hot-spare Exception; Array Exception; Voltage Alarm(IPC); RTC Failure
Intelligent Analytics	
AI by Camera	Tripwire; Double Tripwire; Perimeter; Object Abandon; Object Missing; Loiter; Running; Parking; Heatmap; Video Abnormal; Audio Abnormal; License Plate Recognition; On Duty Detection; Crowd Detection; Parking Guard; Safety Helmet Detection; Electric Bicycle Detection; People Counting; Link to Tracking; Smoke and Fire Detection; Environmental Temperature Measurement; Face Detection; Human Body Temperature Measurement; Smart Motion; Face Recognition; Human/Vehicle Classification
VCA Search	Heatmap; Early-warning Search; Behavior Search; License Plate Search; Safety Helmet Search; Thermographic Retrieval; Duty Search; Electric Bicycle Retrieval; Face Search
Face Detection	
Face Attributes	Gender; Age; Glasses; Face Mask; Body Temp.

Face Recognition	
Face Picture Library	Up to 300 face libraries Up to 100000 base images
Face Picture Comparison	Face Picture Comparison (Cooperate with facial recognition IPC)
Storage	
HDD Capacity	Up to 24 TB capacity for each HDD
Disk Group	8 Disk Group
RAID	JBOD, RAID0, RAID1, RAID5, RAID6, RAID10
Hot Swapping	Yes
External Port	
eSATA	1×eSATA
USB	2×USB2.0; 1×USB3.0
HDMI	2×HDMI(supports up to 4K resolution output)
VGA	2×VGA
Network Interface	2×RJ-45, 10/100/1000 Mbps self-adaptive Ethernet port
SATA	16×SATA interface
RS232	1×RS232
RS485	2×RS485
Alarm I/O	16-ch, TTL inputs, 3mA, 3.3VDC; 4-ch, relay outputs, 1A, 24VDC
General	
UI Language	English; Spanish; Korean; Italian; Turkish; Russian; Thai; French; Polish; Dutch; Hebrew; Arabic; Vietnamese; German; Ukrainian; Portuguese; Albanian
Power Supply	100~240V AC; Redundant Power Supply
Power Consumption	<25W(HDD not included, idling)
NetWeight	18Kg
Gross Weight	20Kg
Boundary Dimensions	540(L)484(W)132(H)mm
Package Dimensions	666(L)575(W)249(H)mm
Operating Temperature	-10°C~+55°C (+14°F~+131°F)
Operating Humidity	10%~90%RH (non-condensing)
Storage Temperature	-20°C~+60°C (-4°F~+140°F)
Package Kit	Network Video Recorder; Screw Pack; Mouse; European Standard Power Cord
Certification	CE, FCC, BIS & RoHS

DIMENSIONS



ORDERING INFORMATION

AL-NVR5080-16DRAIDHS-R

80CH INTELLIGENT 16MP 16SATA RAID HOTSWAP NVR



*Product specifications and availability are subject to change without notice. Terms and Conditions Apply.

