

AL-NVR5160-16DRAIDHS

Smart 160CH 16MP 16SATA RAID HOTSWAP NVR

- S+265/H.265/H.264 video formats
- Connectable to the third-party network cameras
- Up to 160 IP cameras can be connected
- Live view and playback Up to 16MP resolution
- 16 SATA interfaces, up to 18TB for each HDD
- Hot Swapble HDDs
- S+265 compression reduces storage space up to 75%
- 2 self-adaptive 10/100/1000Mbps network interfaces
- Centralized management of IP cameras
- Two-way audio comunication
- VCA detection alarm is supported
- Web version6, Plug-in-free & supports all browsers
- Heatmap, AutoTracking & On duty detection
- Smart search for playback area



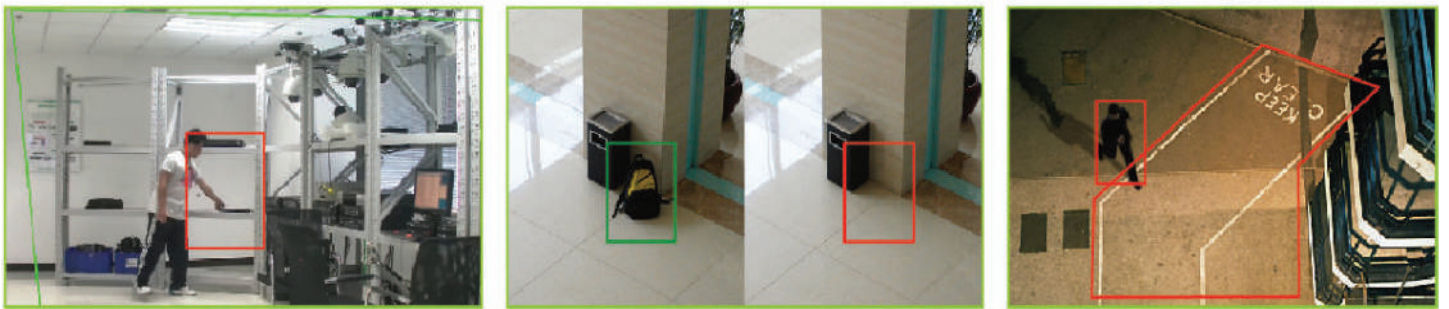
4K Network Video Recorder

The Alcon AL-NVR5160-16DRAIDHS NVR is for the Smarter generation. It is a Smart Enterprise NVR which supports up to 160CH 4K IP camera input and recording. It Supports Smart Recording, Smart Search and Smart Plug and Play. It Supports any 3rd party OEM IP camera with ONVIF compliance. The Alcon Premium Series NVR also supports intelligent video analytics like Face Detection, People Counting and many other features.

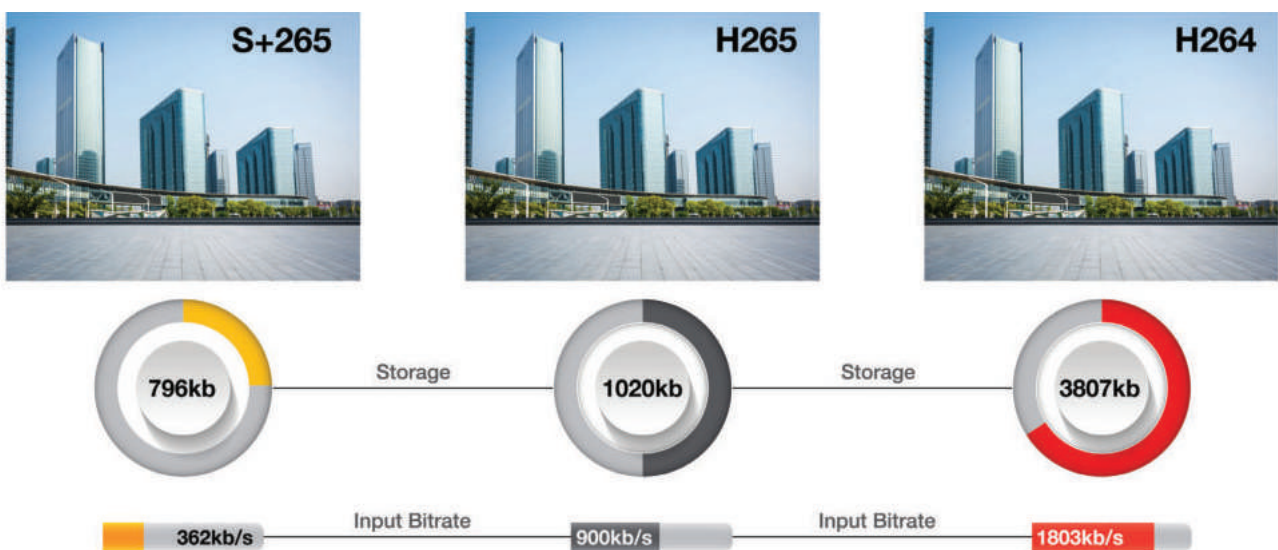
SMART RECORDING



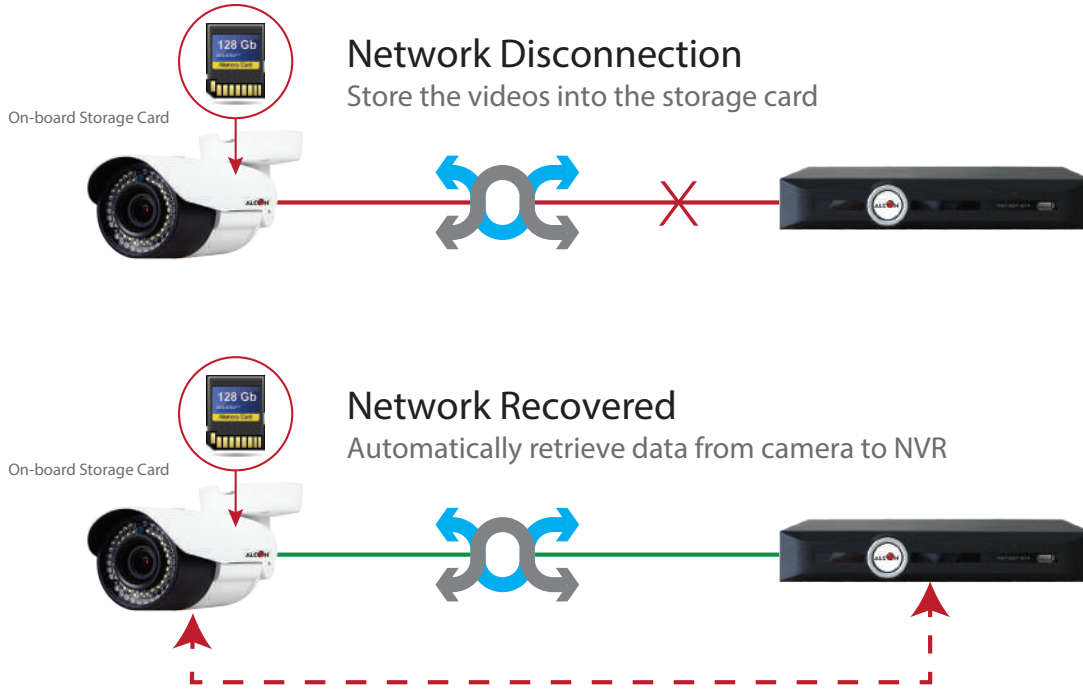
SMART ANALYSIS



BANDWIDTH AND DISK SPACE

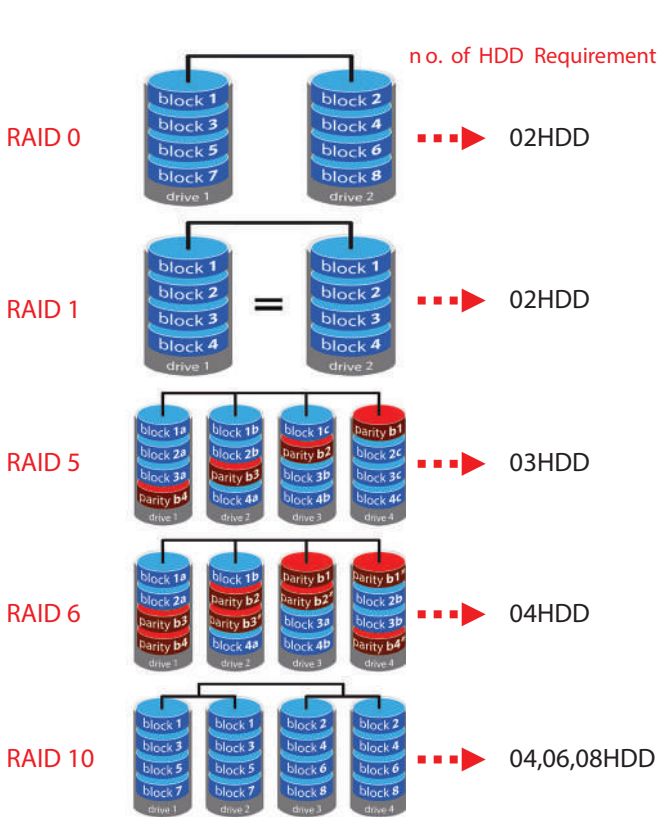


S+265 can save approximate 50% bitrate than H.265 technology, saves 70%-80% bandwidth compared with H.264



ANR Features

NVRs (Network Video Recorders) with the ANR (Automatic Network Replenishment) function can automatically store video data on the IPC (Internet Protocol Camera) storage card when the network is disconnected. After recovery of the network, the NVR automatically retrieves the video data stored on the camera.



RAID (Redundant Array of Independent Disks)

Originally Redundant Array of Inexpensive Disks) is a data storage virtualization technology that combines multiple physical disk drive components into one or more logical units for the purposes of data redundancy, performance improvement, or both. Alcon premium series RAID enabled NVRs are coming with 6 different RAID levels JBOD,RAID0,RAID1,RAID5,RAID6,RAID10 (>0°C, Each Raid Group Supports up to 100Mbps Input). JBOD(Just a Bunch Of Disks) means that your data is on single, stand-alone hard drives. If a one of your JBOD disks fails, the data on that disk is probably lost.

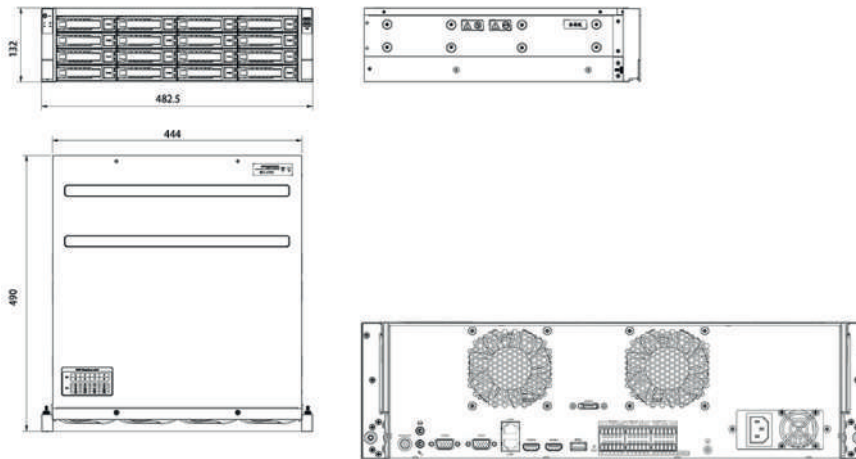
- RAID 0 – striping
- RAID 1 – mirroring
- RAID 5 – striping with parity
- RAID 6 – striping with double parity
- RAID 10 – combining mirroring and striping

SPECIFICATION

Video and Audio	
Access Channel	160
Incoming Bandwidth	640Mbps
Outgoing Bandwidth	320Mbps
Resolution	16MP/12MP/8MP/6MP/5MP/4MP/3MP/1080P/UXGA/720P/VGA/4CIF/DCIF/2CIF/CIF/QCIF
Preview decoding capability	16MP*3,12MP*4,8MP*6,6MP*8,5MP*9,4MP*12,3MP*16,1080P*24,720P*40,4CIF*40
Playback decoding capability	16MP*3,12MP*4,8MP*6,6MP*8,5MP*9,4MP*12,3MP*16,1080P*16,720P*16
Video Output	independent HDMI1 and HDMI2 outputs independent VGA1 and VGA2 outputs simultaneous HDMI1 and VGA1 outputs simultaneous HDMI2 and VGA2 outputs
HDMI Output	HDMI:800*600(60Hz),1024*768(60Hz),1280*720(50Hz/60Hz),1280*800(60Hz), 1366*768(60Hz),1440*900(60Hz),1920*1080(50Hz/60Hz),2560*1440(30Hz/60Hz), 2560*1600(60Hz),3840*2160(30Hz/60Hz)
VGA Output	VGA:800*600(60Hz),1024*768(60Hz),1280*720(50Hz/60Hz),1280*800(60Hz), 1366*768(60Hz),1440*900(60Hz),1920*1080(50Hz/60Hz)
Multi-screen Display	1/2/3/4/5/6/7/8/9/10/12/13/16/20A/20B/25/32/36/40/64/80
Third-party Camera Access	ONVIF;RTSP
Audio Input	1-ch,3.5mm
Audio Output	1-ch,3.5mm;BNC
Two-Way Audio	1-ch,3.5mm,using the audio input
Liveview display	Independent Output: HDMI1/VGA1: 1/2/3/4/5/6/7/8/9/10/12/13/16/20A/20B/25/32/36/40/64/80 HDMI2/VGA2: 1/2/3/4/5/6/7/8/9/10/12/13/16/20A/20B/25/32/36/40/64/80
Compression	
Video	S+265;H.265;S+264;H.264
Audio	G711A;G711U;AAC;ADPCM_DIV4
Stream Type	Video;Video & Audio
Network	
Network Protocol	ARP;DDNS;DHCP;DNS;Easy DDNS;FTP;HTTP;HTTPS;ICMP;IGMP;IPv4;IPv6;Multicast; NFS;NTP;PPPoE; RTCP;RTP;RTSP;SMB/CIFS;SMTP;SNMP;SRTP;SSH;SSL;TLSv1.2;TLSv1.3;TCP/IP;UDP;Unicast;UPnP
Mobile Phone Access	Android;iOS;P2P_A
System Compatibility	ONVIF(profile T/S/G);CGI;SDK
Web	IE 10+;Firefox52+;Edge89+;Safari 11+;Chrome57+
Record Playback	
Multi-channel Playback	16
Record Mode	Manual recording;alarm recording;Schedule recording
Storage	Local HDD/USB storage device/eSATA
Backup	USB storage device
Playback Function	Play/Pause/Stop/Slow/Speed/Backwards 30s/Forwards 30s/Full screen/backup (video Editing)/Step/Digital Zoom
Alarm	
General Alarm	Motion;Mask Alarm;Alarm Input(IPC);Video Loss;Alarm Input(NVR);Manual Alarm
Alert Alarm	IP Conflict;MAC Conflict;Network Disconnected;No disk;Illegal Access;Disk group space alert;Disk Full;Disk R/W error;Video Abnormal; Abnormal found in smart of disk;Abnormal temperature of the disk;Hot-spare Exception;Array Exception;IPC voltage abnormal;RTC failure
Intelligent Analytics	
VCA Detection by Camera	Tripwire;Double Tripwire;Perimeter;Object Abandon;Object Missing;Loiter;Running; Parking;Heatmap;Lens Dignose;Scene Switch Dignose;Signal Abnormal Detection; Signal Loss Detection;Plate License Recognition;On Duty Detection;Crowd Detection; Parking guard;Safety Helmet Detection;Electric vehicle testing;People Counting; Link To Tracking;Fireworks detection;Environmental temperature measurement; Face Detection;Human body temperature measurement;Advanced Intelligence
VCA Search	Heatmap;Early-warning search;Behavior Search;Plate license search;Search safety helmet;Thermographic retrieval;Duty search;Electric vehicle retrieval;Facial search
Face Detection by Camera	
Face Attributes	Gender;age;glasses;mouth mask;Body temp.
Face Picture Library	Up to 300 face libraries
Face Picture Comparison	Up to 100000 base images
Face Picture Comparison	Cooperate with facial recognition machine

External Port	
HDD	16 SATA ports, up to 18 TB for a single HDD. The maximum HDD capacity varies with environment temperature
Disk Group	8 Disk Group
RAID	JBOD, RAID0, RAID1, RAID5, RAID6, RAID10, RAID 50, RAID 60
eSATA	1eSATA
USB	2*USB2.0; 1*USB3.0
HDMI	2*HDMI (supports up to 4K resolution output)
VGA	2*VGA
RJ-45	2*RJ-45, 10/100/1000 Mbps self-adaptive Ethernet port
SATA	16 SATA interface
RS232	1*RS232
RS485	2*RS485
Alarm I/O	16channel in; 4channel out
General Parameter	
UI Language	English; Spanish; Korean; Italian; Turkish; Russian; Thai; French; Polish; Dutch; Hebrew; Arabic; Vietnamese; German; Ukrainian; Portuguese; Albanian
Power Supply	100~240V AC
Power Consumption	< 25W (HDD not included, idling)
NetWeight	11.75Kg
GrossWeight	17.6Kg
Boundary Dimensions	540(L)484(W)132(H)mm
Package Dimensions	666(L)575(W)249(H)mm
Operating Temperature	-10 ~ +55
Operating Humidity	10%~90%RH
Storage Temperature	-10 ~ +55
Storage Humidity	10%~90%RH
Package Kit	Network Video Recorder; Screw pack; Mouse; European standard power cord
Certification	CE, FCC, BIS & RoHS

DIMENSIONS



ORDERING INFORMATION

AL-NVR5160-16DRAIDHS

Smart 160CH 16MP 16SATA RAID HOTSWAP NVR



*Product specifications and availability are subject to change without notice. Terms and Conditions Apply.

