

# AL-NVR5160-24DRAIDHS

## S+265 160CH 24SATA HOT SWAP NVR

- Up to 12MP Resolution Recording
- Bandwidth in/out 1280Mbps/640Mbps
- JBOD,RAID0,RAID1,RAID5,RAID6,RAID10, RAID50, RAID60
- HDD Quota and Group Management
- 4X 100/1000Mbps Self-adaptive Ethernet Interfaces
- Support 160-ch Intelligent Analysis Process
- Fisheye Connection & Fisheye Dewarping
- Smart Search&Recording, Plug&Play
- Support ANR Function, Max Resolution 4K
- Support N+M Hot Standby Function
- 2x HDMI, 1x VGA, Different Video Source
- 24 SATA Interface. Alarm I/O 16/6, Audio I/O 1/1
- 4x USB,2x RS-485, 1x RS-232
- BIS, CE & FCC

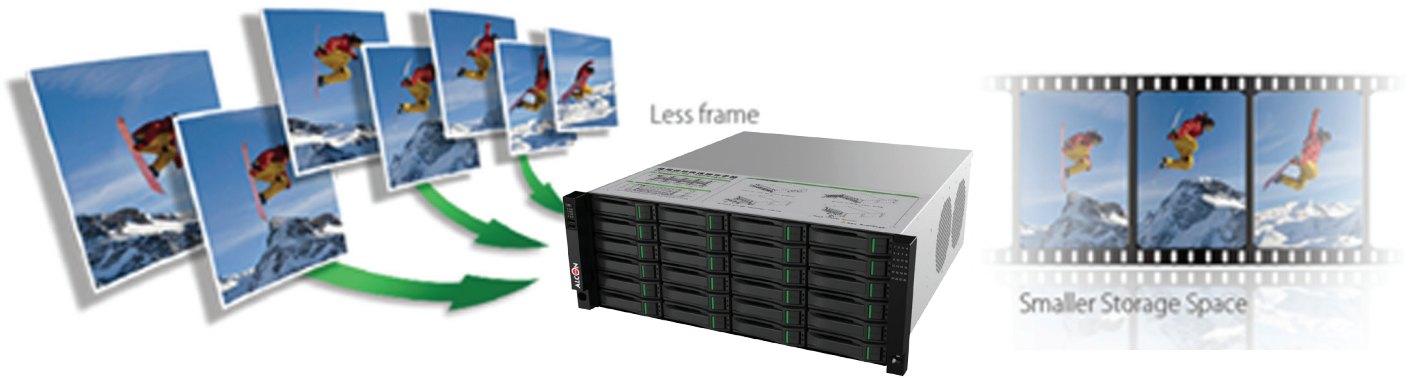




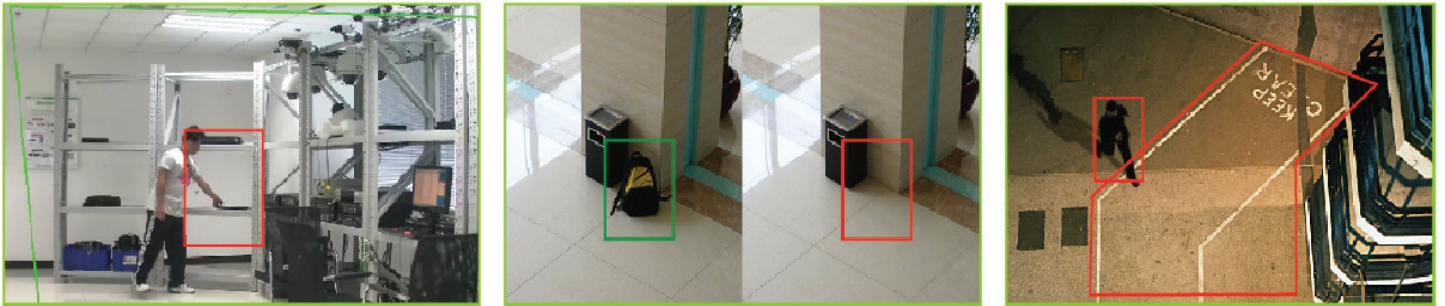
## 4K NETWORK VIDEO RECORDER

The Alcon AL-NVR5160-24DRAIDHS NVR is for the Smarter generation. It is a Smart Enterprise NVR which supports up to 160ch 4K IP camera input and recording. It Supports Smart Recording, Smart Search and Smart Plug and Play. It Supports any 3rd party OEM IP camera with ONVIF compliance. The Alcon Premium Series NVR also supports intelligent video analytics like Face Detection, People Counting and many other features.

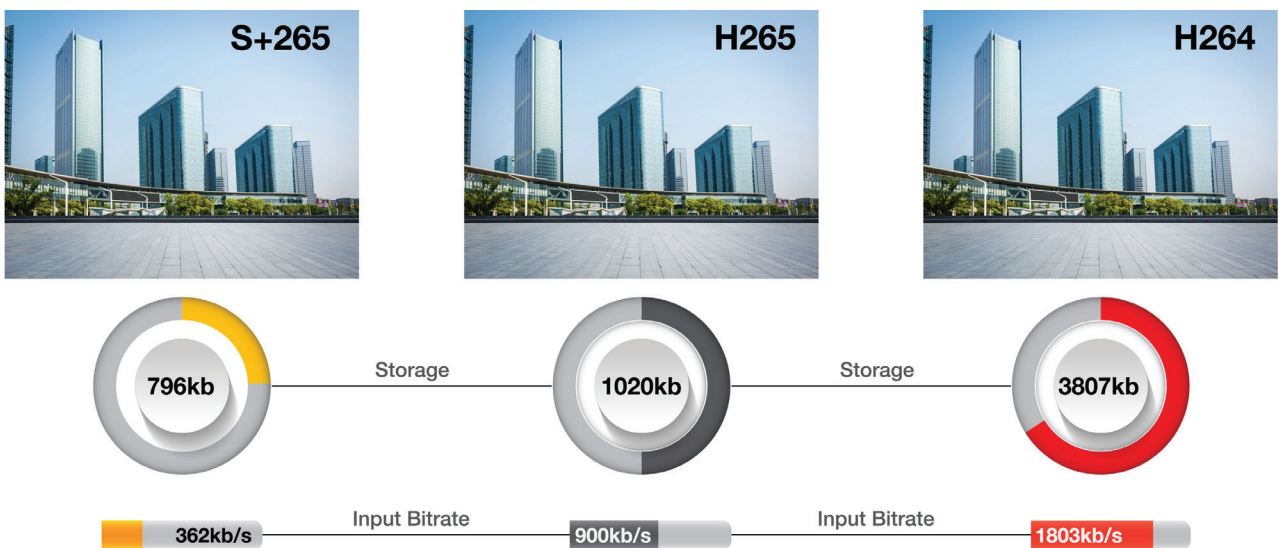
## SMART RECORDING



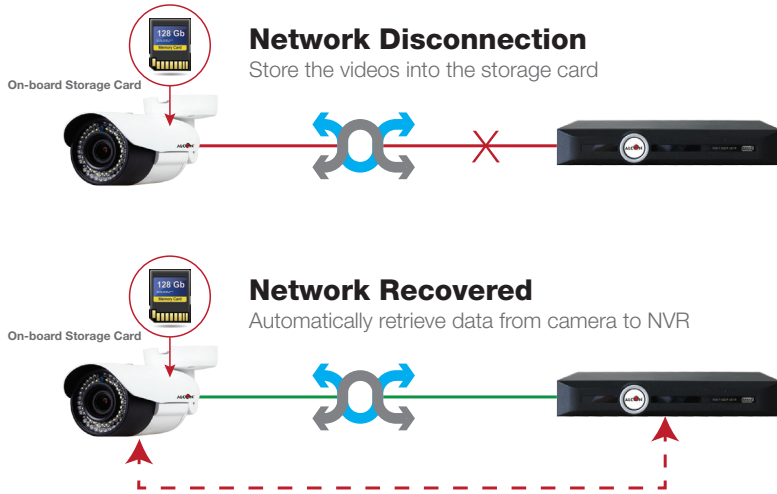
## SMART ANALYSIS



## BANDWIDTH AND DISK SPACE



S+265 can save approximate 50% bitrate than H.265 technology, saves 70%-80% bandwidth compared with H.264

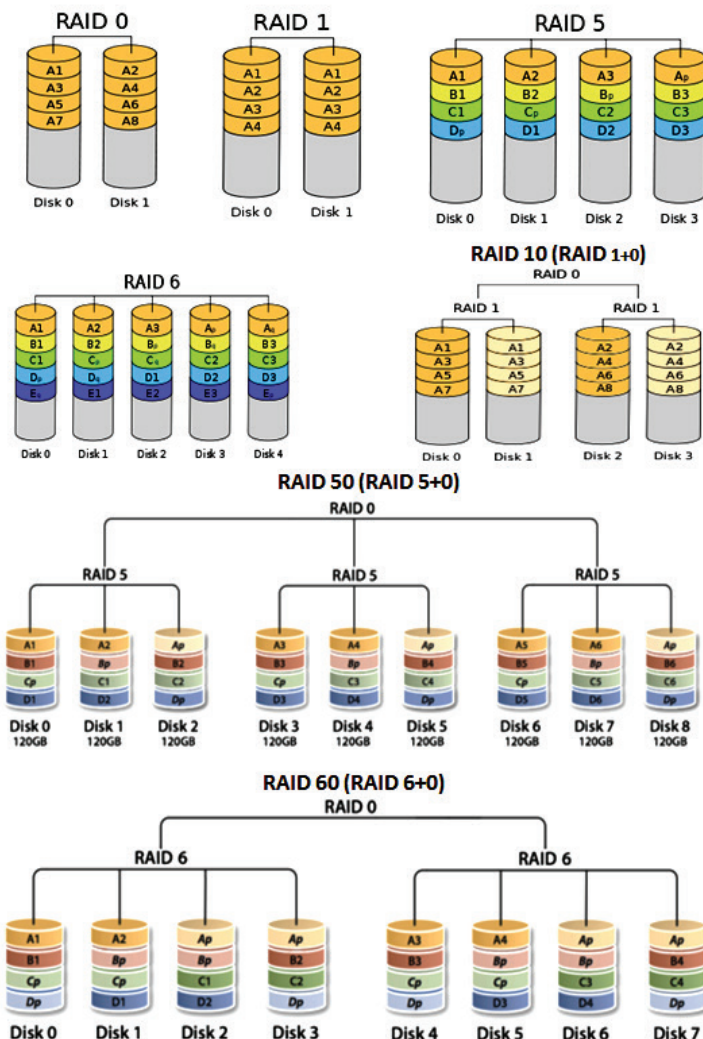
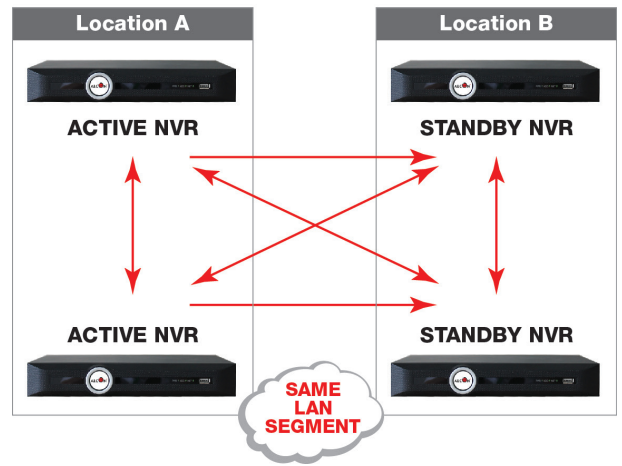


## ANR FEATURES

NVRs (Network Video Recorders) with the ANR (Automatic Network Replenishment) function can automatically store video data on the IPC (Internet Protocol Camera) storage card when the network is disconnected. After recovery of the network, the NVR automatically retrieves the video data stored on the camera.

## HOTSTANDBY N+M

N+M — In cases where a single NVR is working as standby of multiple active NVRs, having only one dedicated failover node might not offer sufficient redundancy. In such cases, more than one (M) standby NVRs are included and available. The number of standby NVRs is a tradeoff between cost and reliability requirements



## RAID (REDUNDANT ARRAY OF INDEPENDENT DISKS)

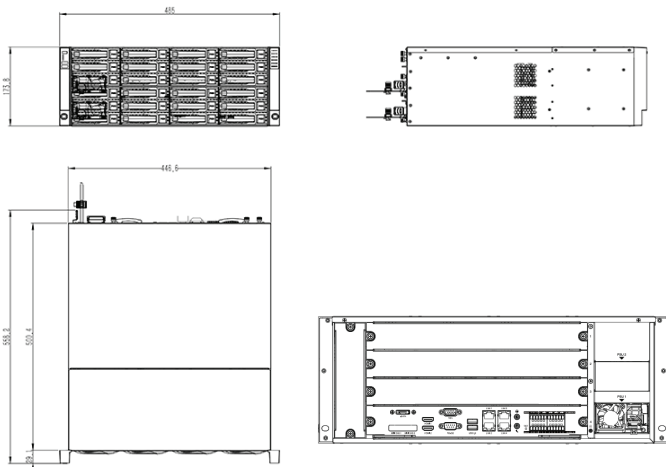
Originally Redundant Array of Inexpensive Disks) is a data storage virtualization technology that combines multiple physical disk drive components into one or more logical units for the purposes of data redundancy, performance improvement, or both. Alcon premium series RAID enabled NVRs are coming with 6 different RAID levels JBOD, RAID 0, RAID 1, RAID 5, RAID 6, RAID 10, RAID 50, RAID 60 (>0°C, Each Raid Group Supports up to 100Mbps Input).

- **JBOD**(Just a Bunch Of Disks) means that your data is on single, stand-alone hard drives. If a one of your **JBOD** disks fails, the data on that disk is probably lost.
- **RAID 0** – Striping it can perform higher than the single-disk.
- **RAID 1** – Mirrored pair contains two disks.
- **RAID 5** – Striping with parity **RAID 5** requires at least three disks.
- **RAID 6** – Striping with double parity it requires minimum four disks.
- **RAID 10** – Combining mirroring and striping, it requires a minimum of four drives.
- **RAID 50** – **RAID 50**, also called **RAID 5+0**, combines the straight block-level striping of **RAID 0** with the distributed parity of **RAID 5**. As a **RAID 0** array striped across **RAID 5** elements, minimal **RAID 50** configuration requires six drives.
- **RAID 60** – **RAID 60**, also called **RAID 6+0**, combines the straight block-level striping of **RAID 0** with the distributed double parity of **RAID 6**, resulting in a **RAID 0** array striped across **RAID 6** elements. It requires at least eight disks.

**SPECIFICATION**

<b>MODEL</b>	<b>AL-NVR5160-24DRAIDHS</b>
<b>VIDEO/AUDIO INPUT</b>	
Video Input	160-ch
Audio Input	1-ch, 3.5mm
<b>NETWORK</b>	
Bandwidth	Incoming 1280Mbps; Outgoing 640Mbps
Mobile Software	P2P&DDNS for IOS&Android
Internet Protocol	TCP/UDP/HTTP/MULTICAST/UPnP/DHCP/PPPoE/DDNS/NFS/FTP/NTP/HTTPS/RTSP/SMTP/HTTPS/SADP/SNMP
Email	Activated by Alarm
ANR	Y, Auto download video from camera SD card, Which was stored when disconnection (Only Support Alcon ANR IP Camera)
Advanced	Remaining Bandwidth Display, Flow Monitor, Capture Package
<b>VIDEO/AUDIO OUTPUT</b>	
HDMI Output	2-ch Resolution:4096*2160, 3840*2160, 2560*1600, 1600*1200, 3840*2160,2560*1600,2560*1440, 1920*1080,1280*720, 800*600,1024*768,1366*768,1440*900,1280*800
VGA Output	1-ch Resolution: 1920*1080, 1600*1200, 1280*1024, 1280*720, 800*600,1024*768, 1366*768, 1440*900, 1280*800 Adjustable Output mode, Self-adaptive Resolution
I-Frame Record	Y, Only Record Key Frame to Lower Frame Rate
Recording Resolution	12MP/4K(3840*2160,3264*2448,3296*2472)/6MP(2752*2208,3008*2008,2408*2008)/5MP(2560*1920,2592*1944,2592*1920,2528*2128)/4MP(2560*1440,2592*1520)/3MP(2048*1536)/1080P/UXGA/720P/VGA/4CIF/DCIF/2CIF/CIF/QCIF
Audio Output	1-ch 3.5mm
Synchronous Playback	16-ch 4CIF/16-ch 720P/16-ch 1080P/5-ch 4K
Fisheye	Fisheye Connection & Fisheye Dewarping
<b>DECODING</b>	
Live View/Playback	12MP/4K/6MP/5MP/4MP/3MP/1080P/UXGA/720P/VGA/4CIF/DCIF/2CIF/CIF/QCIF
Capability	5-ch 4K/20-ch 1080P/40-ch 720P/80-ch 4CIF
Display Split	1/3/4/6/8/9/10/13/16/20/25/32/36/40/64
E-Zoom	Y

**DIMENSIONS**



<b>HARD DISK</b>	
SATA	24 SATA for 24 HDDs (Hot Swap)
eSATA	Y, Only for Backup
Capacity	Up to 10 TB Capacity for Each HDD
NTFS File System	Y
HDD Management	Group and Quota, Customized Recording Days
<b>RAID</b>	
RAID Mode	JBOD, RAID0, RAID1, RAID5, RAID6, RAID10, RAID50, RAID60
Hot Backup Disk	Overall and Raid Hot Backup Disk
RAID Management	One-key Configuration, and Support Manual and Auto Rebuild
Redundant Recording	Y, Support 200Mbps Input
<b>EXTERNAL INTERFACE</b>	
Network Interface	4 100/1000Mbps Self-adaptive Ethernet Interfaces
Serial Interface	2 x RS-485, 1 x RS-232
USB Interface	2x USB3.0, 2x USB2.0
Alarm In/Out	16/6
<b>ADVANCE</b>	
NAS	NFS Protocol, Support Manual Backup Only
Plug and Play	Y, Only for Alcon Cameras
Image Flip	Y, Only for Alcon Cameras
Hot Standby	N+M
Corridor Mode	Y, 16:9 to 9:16, Only for Alcon Cameras
Video Analytics(VCA)	All VCA with IPC: Tripwire/Double Tripwire/Perimeter/Object Abandon/Object Lost/Running/Loitering/Parking/Early Warning/Crowd/Face Detection/People Counting/Audio Abnormal Detection/Video Abnormal Detection/On duty Detection/intelligent tracking/Heat map
Smart Search	Quickly Search Target Videos according to Channel No., Records Type, Records Time, File Type and VCA( Only for Alcon Cameras )
Trigger Recording	Manual/Timing/Motion Detection/Port Alarm/VCA/Video Occlusion
Smart Recording	Set Different Recording Bite Rate for Different Time
Alarm Recording	Pre Alarm Default 10s ( 5/10/15/60s Optional ), Post Alarm Default 10s (10/15/30/60/600s Optional ).
One Key Control	Intercom, Recording
Records Format	SDV, MP4
Records Encryption	Y
Records Tag	Y
Onvif	Onvif(Profile S)
<b>GENERAL</b>	
Language	English, Spanish, Korean, Italian, Turkish, Thai, Russian, Polish, French, Traditional Chinese, Simplified Chinese, Dutch, Hebrew(UI)
Power Supply	100 ~ 240V AC, 50 ~ 60Hz
Consumption (without HDD)	≤100W (without HDD)
Working Temperature	0°C~55°C
Working Humidity	10 % ~ 90 %
Chassis	4U
Dimensions	558.2x446.2x173.8 mm (21.98x17.57x6.84 inch)
Weight	17Kg (37.48lb)
Certification	BIS, CE, FCC

**ORDERING INFORMATION**

AL-NVR5160-24DRAIDHS 160 Channel 24 SATA Hot Swapable NVR



\*Product specifications and availability are subject to change without notice.