

AL-NVR5200-24DRAIDHS

AL-2000 All-In-One Powerful Video Management Server

- 4U front panel HDD slots design, support up to 24 HDDs
- Support centralized storage, decoding, forwarding and management of IP cameras, stream servers, NVRs and decoders, up to 2000 channels
- Support 2 HDMI & 1VGA output interfaces and 18 1080P decoding
- Linux OS embedded operating system
- Support web management UI
- Able to conduct face search
- Video input bandwidth 512M, output bandwidth 400M; Video recording channel 256/forwarding channel 200 (Disable face recognition)
- Support local video storage, Support NTP function
- Able to operate the configuration and monitor the status of disk and RAID group by adopting visible management UI
- Support RAID 0/1/5/6/10/50/60
- Simultaneous image storage and video storage: Video storage performance supports up to 180 channels (2Mb, H265)



Network Video Recorder

The Alcon AL-NVR5200-24DRAIDHS is for all-in-one NVR that combines Alcon's powerful smarter generation equipment which support video wall template configuration and video switch. It is an intelligent network video recorder which supports up to 180 IP camera input and recording for centralized managed control room solution. Which able to conduct human, vehicle, attendance, device and access control. It Supports any 3rd party OEM IP camera with ONVIF compliance. The Alcon AL-NVR5200-24DRAIDHS also supports linkage of VCA functions. The AL-NVR5200-24DRAIDHS unique design provides both powerful storage and advanced centralized video management capabilities.

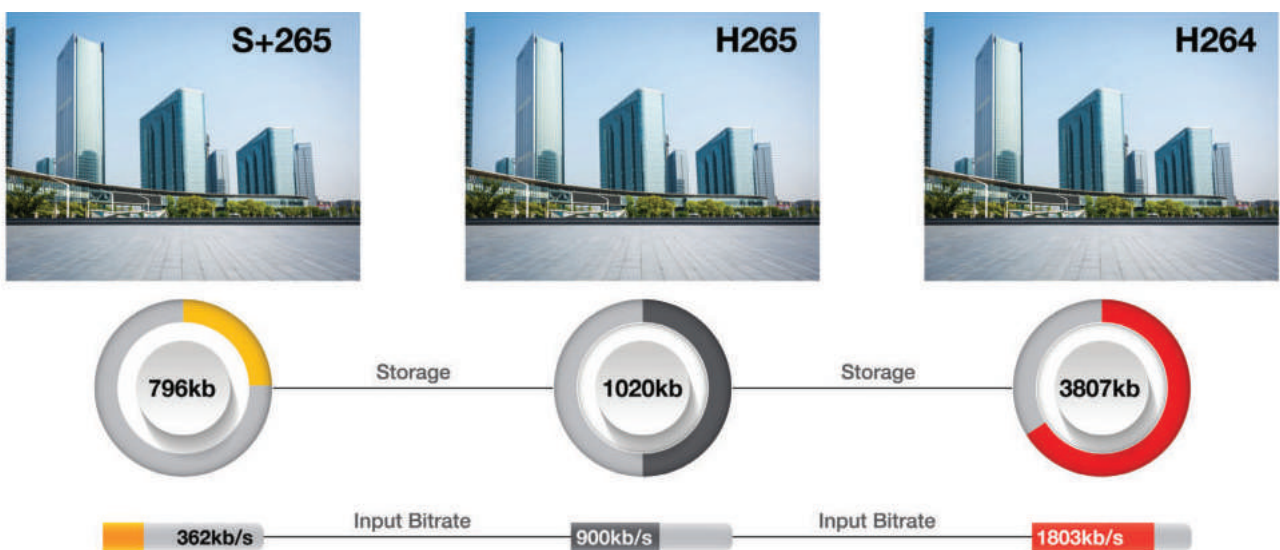
SMART RECORDING



SMART ANALYSIS



BANDWIDTH AND DISK SPACE

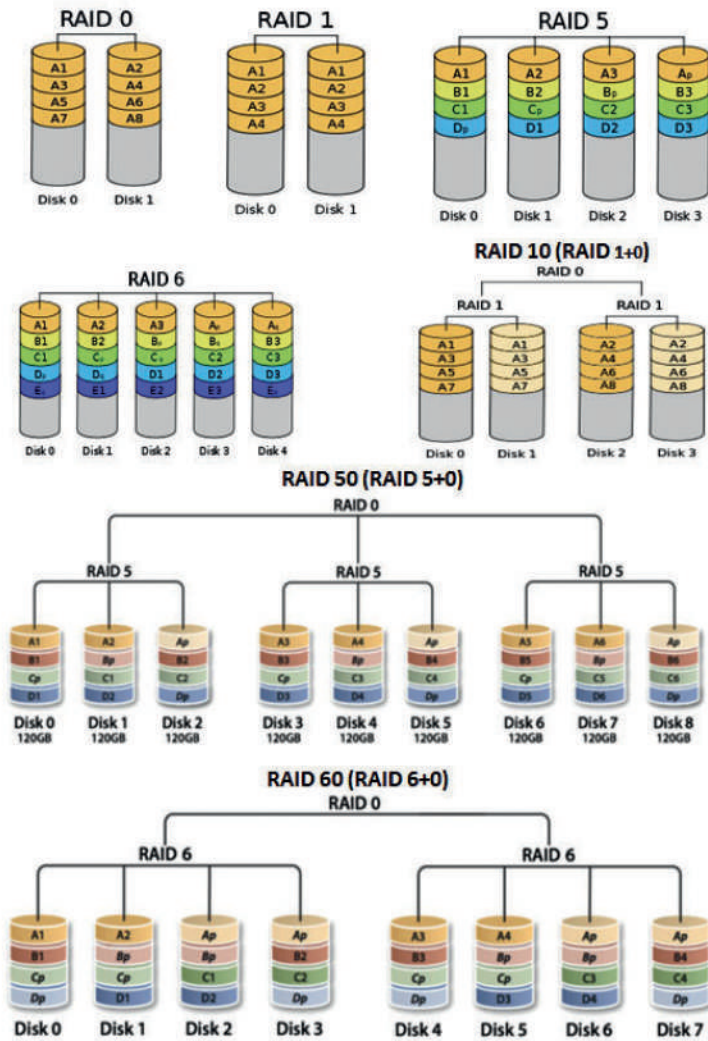


S+265 can save approximate 50% bitrate than H.265 technology, saves 70%-80% bandwidth compared with H.264

RAID (REDUNDANT ARRAY OF INDEPENDENT DISKS)

Originally Redundant Array of Inexpensive Disks) is a data storage virtualization technology that combines multiple physical disk drive components into one or more logical units for the purposes of data redundancy, performance improvement, or both. Alcon premium series RAID enabled NVRs are coming with 6 different RAID levels JBOD, RAID 0, RAID 1, RAID 5, RAID 6, RAID 10, RAID 50, RAID 60 (>0°C, Each Raid Group Supports up to 100Mbps Input).

- **JBOD**(Just a Bunch Of Disks) means that your data is on single, stand-alone hard drives. If a one of your JBOD disks fails, the data on that disk is probably lost.
- **RAID 0** – Striping it can perform higher than the single-disk.
- **RAID 1** – Mirrored pair contains two disks.
- **RAID 5** – Striping with parity RAID 5 requires at least three disks.
- **RAID 6** – Striping with double parity it requires minimum four disks.
- **RAID 10** – Combining mirroring and striping, it requires a minimum of four drives.
- **RAID 50** – RAID 50, also called RAID 5+0, combines the straight block-level striping of RAID 0 with the distributed parity of RAID 5. As a RAID 0 array striped across RAID 5 elements, minimal RAID 50 configuration requires six drives.
- **RAID 60** – RAID 60, also called RAID 6+0, combines the straight block-level striping of RAID 0 with the distributed double parity of RAID 6, resulting in a RAID 0 array striped across RAID 6 elements. It requires at least eight disks.



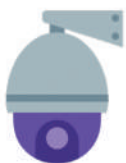
DEVICE MANAGEMENT

- Supports management of IP cameras, NVRs and network video encoder/decoders
- Supports configuration of device information and account authority
- Supports detection of device status



VIDEO PREVIEW

Supports auto switch of main and second stream, live windows can be drag to form a large single window. The number of screens per row/column can be customized as well. Supports electronic zoom, image capture. Supports switch by channel, group and all, users can customize switch plan



PTZ CONTROL

Supports pan tilt and zoom control including 8 directions control, zoom/aperture/focus settings, preset settings, wiper control and 3D positioning



VIDEO MANAGEMENT

Supports storage template that users can easily arrange start time, end time, week time and recording duration



VIDEO PLAYBACK

- Supports device storage/centralized storage/local storage and multiple method for searching video.
- Supports timing video recording, playback, video download, image capture, multi-speed playback in NVR.



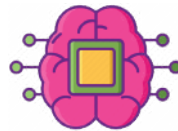
VIDEO WALL

Supports video wall template configuration and video switch.



EVENT MANAGEMENT

Supports multiple alarm types and linkage of alarm input and output interfaces. Events can be prioritized by importance.



INTELLIGENT ANALYSIS

Supports linkage of VCA functions



USER MANAGEMENT

Supports user account management like setting authority and expiration time



ALARM LINKAGE

Supports linkage of alarm output, video recording, sound, video wall, e-map, image capture and preset of PTZ



E-MAP

Supports using super high-resolution picture as e-map background. Supports multiple tiled maps and different surveillance icons overlay on maps



LOG MANAGEMENT

- Supports recording log like adding, deleting and modifying for each module independently
- Supports searching and exporting log information for each module



DECODING

- Support 2 HDMI& 1VGA output interfaces and 18 1080P decoding
- Support 3 optional decoding cards and up to 18 screens output



TWO-WAY AUDIO

Supports two-way audio to devices and volume is adjustable



COMPATIBLE DEVICES

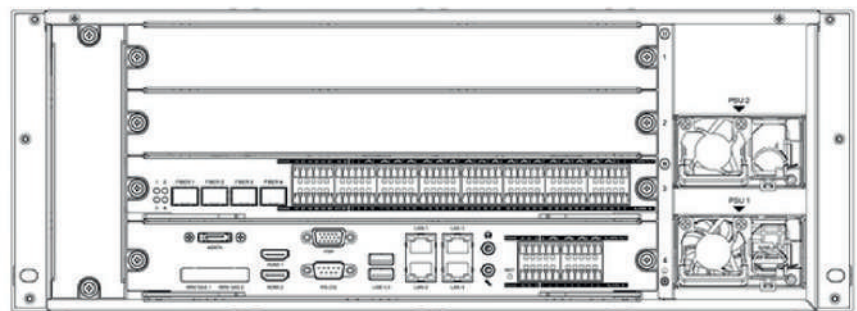
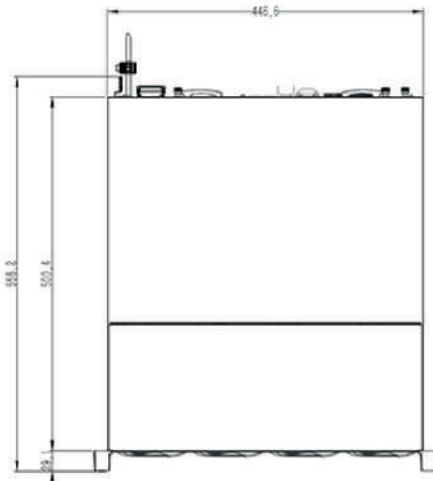
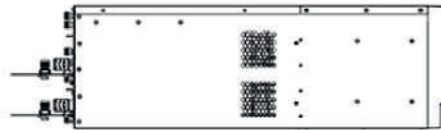
- Support access of IP cameras, NVRs, centralized storage and NVRs.
- Support 180 channels access via ONVIF and private protocol.

SPECIFICATION

Classification	Data Classification	Calculation Rule	K2000
Data Capacity Index	Network Bandwidth	Uplink Bandwidth	1000
	Point Number	1 Point/Server	1000
	Number of Users		5000
	Organizational Area		1000
	Number of years	Year	0.25
	Map Punctuation		1000
	Local Decoding Performance		4
	(output resolution)		
	Video Storage Performance	2M/Point	180
	Video Forwarding Performance	2M/Point	180
	No Plug-In	Client Configuration	Main code stream/Code rate
i5-9500		/1080p/2048/25/H.265	
16G		Main code stream/Code rate	8
Video Preview (decode using CPU)		/720p/2048/25/H.265	
Google versions below 9.0		Main code stream/Code rate	10
support this capability		/1080p/2048/25/H.264	
		Main code stream/Code rate	16
		/720p/2048/25/H.264	
		Main code stream/Code rate	5
		/1080p/2048/25/H.265	
		Main code stream/Code rate	10
		/720p/2048/25/H.265	
		Main code stream/Code rate	12
		/1080p/2048/25/H.264	
		Main code stream/Code rate	16
	/720p/2048/25/H.264		
	Sub stream/Code rate	16	
	4CIF/2048/25/H.265		
No Plug-In	Client Configuration	Main code stream/Code rate	4
	i5-9500	/1080p/2048/25/H.265	
	16Gs	Main code stream/Code rate	8
	Video Playback (decode using CPU)	/720p/2048/25/H.265	
		Main code stream/Code rate	10
		/1080p/2048/25/H.264	
		Main code stream/Code rate	16
		/720p/2048/25/H.264	
		Main code stream/Code rate	5
		/1080p/2048/25/H.265	
		Main code stream/Code rate	10
		/720p/2048/25/H.265	
		Main code stream/Code rate	12
		/1080p/2048/25/H.264	
		Main code stream/Code rate	16
	/720p/2048/25/H.264		
	Sub stream/Code rate	16	
	/4CIF/2048/25/H.265		

No Plug-In	Client Configuration	Main code stream/Code rate	1
	i5-9500	/1080p/2048/25/H.265	
	16G	Main code stream/Code rate	2
	Video Preview	/720p/2048/25/H.265	
	(decode using CPU)	Main code stream/Code rate	4
	Edge Browser	/1080p/2048/25/H.264	
	(version 107)	Main code stream/Code rate	7
		/720p/2048/25/H.264	
		Main code stream/Code rate	1
		/1080p/2048/25/H.265	
		Main code stream/Code rate	3
		/720p/2048/25/H.265	
		Main code stream/Code rate	10
		/1080p/2048/25/H.264	
		Main code stream/Code rate	16
	/720p/2048/25/H.264		
	Sub stream/Code rate	5	
	/8MP/2048/25/H.265		
No Plug-In	Client Configuration	Main code stream/Code rate	1
	i5-9500	/1080p/2048/25/H.265	
	16Gs	Main code stream/Code rate	2
	Video Playback	/720p/2048/25/H.265	
	(decode using CPU)	Main code stream/Code rate	4
	Edge Browser	/1080p/2048/25/H.264	
	(version 107)	Main code stream/Code rate	7
		/720p/2048/25/H.264	
		Main code stream/Code rate	1
		/1080p/2048/25/H.265	
		Main code stream/Code rate	3
		/720p/2048/25/H.265	
		Main code stream/Code rate	10
		/1080p/2048/25/H.264	
		Main code stream/Code rate	16
	/720p/2048/25/H.264		
	Sub stream/Code rate	5	
	/4CIF/2048/25/H.265		
Pressure	Perform this operation once for	Concurrent online user	5
Performance Index	online users 30 to 60s		
(standard value)			
Pressure	An average of 45 seconds	Concurrent online user	40
performance index	Number of alerts per second	Per/s	15
(peak value)	Number of concurrent	200 Users	4
	login users per second		
File Storage index	Light-weight File Storage	15M/s, 25pictures/s	
	Decoding Performance	The main code stream has a maximum of 80 channels (1080P 2Mbs H265)	
		The sub-code stream has a maximum of 100 channels	
Historical Data Capacity Indicator	Total Log Records		16,00,000
	Total Alarm Records		40,00,000
Data Total	Data Total		56,00,000

DIMENSIONS



ORDERING INFORMATION

AL-NVR5200-24DRAIDHS

160CH 24SATA Ultra Smart Intelligent RAID NVR



*Product specifications and availability are subject to change without notice. Terms and Conditions Apply.

