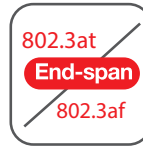
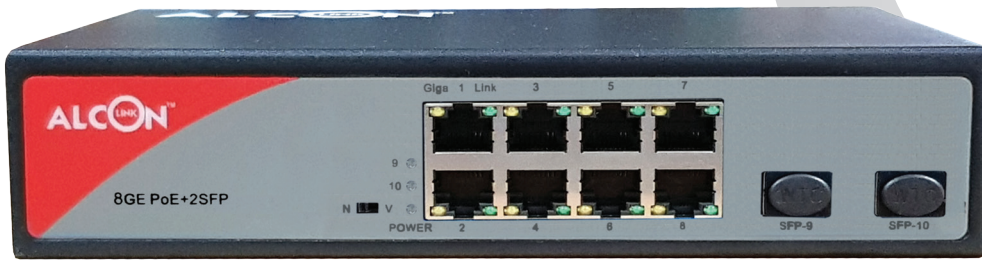


AL-PGS5010-8P-2S-120

8-PORT GIGA POE SWITCH WITH 2SFP

ALCON^{LINK}™
BE SMART, BE SECURE



8-Port 10/100/1000Mbps 802.3af/at PoE+ 2-Port SFP 120 watt PoE budget

OVERVIEW

The Alcon AL-PGS5010-8P-2S-120 coming with eight High Speed gigabit PoE Ports with built-in two Gigabit fiber uplink ports provide fast connection to servers or the backplane of the gigabit speed. The effective connectivity of the eight 10/100/1000Mbps ports, allows growing business networks, classrooms and workgroups to obtain benefits from the demand for superior performance and sustain network expansion. This high-performance switch features with non-blocking, wire-speed switching, and 20Gbps switching capacity. All RJ45 ports can auto adjust the highest connection speed for a normal working, Auto Uplink™ technology can ensure proper network connection.

FEATURES

- 8 Port 10/100/1000Mbps PoE Switch
- 2* SFP UPLINK, Power Budget 120 watt
- Each PoE Port Support 15.4/30watt auto power Budget
- Fully metal body desktop design
- Inbuilt power Supply, ESD and lightning protection
- Complies with IEEE 802.3af/at power over ethernet
- Comply with IEEE 802.3, IEEE 802.3u, IEEE802.3ab standard
- Support auto flip MDI/MDIX, All ports support wire-speed switching
- Exchange mechanism using store-and-forward
- Panel indicators to monitor working status and help fault analysis
- Flow control, full duplex adopts IEEE802.3x standard,
- Flow control, half duplex adopts Backpressure standard

GUARANTEED PROTECTION FOR A SMOOTH OPERATION

The AL-PGS5010-8P-2S-120 protects against the ESD 4kV surge to improve product stability and also protects users' networks from devastating ESD attacks, making sure the flow of operation does not fluctuate.

APPLICATIONS

- 4K and full HD surveillance transmission and power supply
- Enterprise Wireless AP distribution transmission and power supply
- Smart VoIP transmission, intelligent home systems
- Smart City intelligent traffic monitoring system (ITS), safe city, and wireless city
- Highway surveillance system, electronic road surveillance, snapshot system
- large industrial factory& enterprise security surveillance system, network multifunction syste

SPECIFICATION

MODEL	AL-PGS5010-8P-2S-120
SPECIFICATIONS	
I/O INTERFACE	
Power	Input: AC 100-240V, 50/60Hz Output: DC 52V2.3A, Power Budget: 120W
Ethernet	8 Port 10/100/1000M PoE + 2 Port Gigabit SFP Slots
PERFORMANCE	
Switching Capacity	20Gbps
Forwarding Rate	14.88Mpps/port
MAC Address	8K
Transfer Mode	Store and forward
MTBF	100000 hours
STANDARD	
Network protocol	IEEE802.3
	IEEE802.3u
	IEEE802.3x
	IEEE802.3ab
Industry Standard	EMI: FCC Part 15 CISPR (EN55032) class A
	EMS: EN61000-4-2 (ESD), EN61000-4-4 (EFT)
	Shock: IEC 60068-2-27
	Free Fall: IEC 60068-2-32
Network Medium	Vibration: IEC 60068-2-6
	10BASE-T: Cat 3,4,5 UTP(≤100 meter)
	100BASE-T: Cat 5 UTP or more UTP (≤100 meter)
PoE Features	1000BASE-TX: Cat5 or more UTP (≤100 meter)
	Standard: IEEE802.3af/at
	Maximum output power of single port:15.4 W (IEEE 802.3af)
	Maximum output power of single port:30 W (IEEE 802.3at)
	Compatibility:IEEE 802.3af/at self-adaption
	Output Voltage: 48~55V
Power Supply Line Sequence:1/2+, 3/6-	

ENVIRONMENT	
Environment	Working Temperature:-20~50°C
	Storage Temperature:-40~75°C
	Working Humidity :10%~90%,non-condensing
	Storage Temperature:5%~90%,non-condensing
	Working Height:Maximum10,000 feet Storage height:Maximum 10,000 feet
PHYSICAL FEATURES	
Dimension	Product Dimension (L*W*H): 270mm*180mm*45mm
	Package Dimension (L*W*H): 312mm*262mm*84mm
Package List	N.W:1.1kg
	G.W:1.7kg
	1. Switch 1 pc
	2. Power cord 1 pc
	3. User manual 1 pc, 4. Warranty card 1 pc 5. Brackets 1 pair
INDICATORS	
DIP Definition	Extend OFF: Sharing mode, all ports can communicated each other, 10/100/1000M self-adaptive
	Extend ON: 7-8 port supports 250 meters data transmission, the rate dropped down to 10M/s
LED Indicators	PWR (Power Supply) Light on: Powered Light off: Power off
	Mode Flashing: Extend mode Light off: Sharing mode
	1-10 Slow flashing: Link connected Fast flashing: Data transmission Light off: Link disconnected
	LEDs PWR, SW, Link
Certificate	CE, FCC, RoHS

ORDERING INFORMATION

AL-PGS5010-8P-2S-120

8-Port 10/100/1000Mbps 802.3af/at PoE+ 2-Port SFP 120 watt PoE budget



*Product specifications and availability are subject to change without notice.